

# **FEDERAL ROAD SAFETY COMMISSION**



# FRSC

**2008 ANNUAL REPORT**

**FEDERAL ROAD SAFETY COMMISSION**



## CONTENTS

FOREWORD .....	4
FRSC MANDATE.....	5
ABOUT THE REPORT.....	5
POLICY PLANS FOR 2009.....	6
GENERAL ORGANIZATION OF THE COMMISSION.....	6-7
OPERATIONS.....	8
ADMINISTRATION AND HUMAN RESOURCES.....	10
POLICY, RESEARCH AND STATISTICS.....	12
MOTOR VEHICLE ADMINISTRATION.....	24
TRAINING, STANDARDS AND CERTIFICATION.....	30
ENGINEERING AND TECHNICAL SERVICES.....	32
SPECIAL MARSHALS AND PARTNERSHIP.....	34
FINANCE AND ACCOUNTS.....	35
CORPS OFFICES.....	36-45
ZONES AND SECTOR COMMANDS.....	46-47
FRSC AT 20.....	48-68
NOTABLE ACHIEVEMENTS OF THE COMMISSION IN 2008.....	69
SOME SELECTED ROAD CONDITION IN NIGERIA.....	70-82
MAJOR COLLABORATORS/STAKEHOLDERS IN 2008.....	83-84

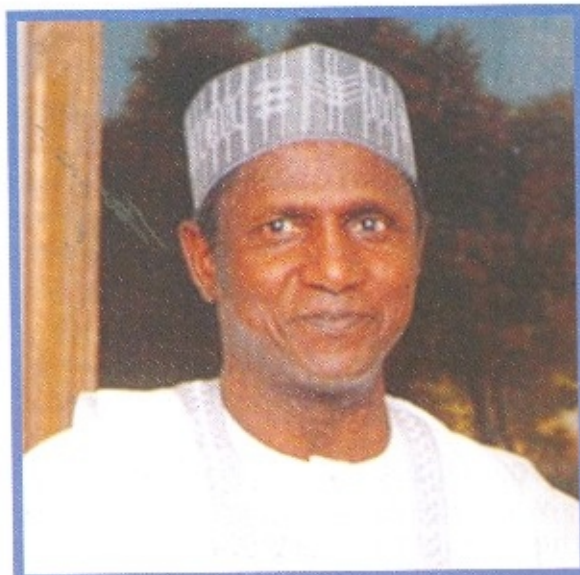
## **VISION**

To eradicate Road Traffic Crashes, and create Safe Motoring Environment in Nigeria.

## **MISSION**

Regulate, Enforce and Coordinate all Road Traffic and Safety management activities through:

- Sustained Public Enlightenment.
- Prompt Rescue Services.
- Improved Vehicle Administration.
- Robust Data Management.
- Promotion of Stakeholders Cooperation.



Umaru Musa Yar'Adua, *CGFR*  
President, Commander-In-Chief of the Armed Forces  
Federal Republic of Nigeria.



Mahmud Yayale Ahmed, *CFR*  
Secretary to Government of the Federation



Osita Chidoka  
Corps Marshal and Chief Executive



## FOREWORD

The task of ensuring safe and effective highways in the country continues to require commitment and dedication from all stakeholders. Our efforts in the last year generally provided positive transformation in the way things are done and will form the basis on which monumental growths are expected.

This report highlights many activities which the FRSC successfully undertook during the period and illustrated a marginal decline in accident. Many field Unit Commands were created in our attempt to broaden our operational base and providing wider field opportunities for our Officers. And to give impetus to the success of understanding future challenges many Officers and Marshals benefited from training courses and workshops both locally and abroad.

Again we tried to provide motivation to Officers and Marshals by the promotion of those who successfully passed the promotion examination conducted in the earlier part of the year. Our sustained public enlightenment I believe, proved quite effective for the education of a wider public. Therefore, I make bold to say that FRSC is on the right track to reduce Road Traffic Crashes to a possible zero level.

However, the year did not go by without its difficulties. The loss of our colleagues shook the entire Commission and I use this opportunity to pay last respect to the departed.

With 2008 behind us we feel that more work needs to be done and we are braced up and insistent in ridding the nation of unwanted high rate of road carnages.

Chidoka Osita  
Corps Marshal & Chief Executive

## **ESTABLISHMENT AND MANDATE**

The Federal Road Safety Commission was established in 1988 as the lead agency on Road Traffic Administration and Safety Management to initiate policies and actions geared towards reduction in Road Traffic Crashes in Nigeria.

The Commission headed by the Corps Marshal and Chief Executive has a council that oversees its activities.

## **ABOUT THE REPORT**

The year under review has generally been as eventful as been challenging. The Corps executed a lot of programs/innovations as part of the vision to reinvent itself through technology.

The year began with the International Conference/20th anniversary on Road Safety with the theme "Road Safety Management in Africa: Vision 2020".

The conference provided the Commission with the opportunity to take stock of its past activities and to chart a course for the future. The primary aim of this report therefore is to highlight the activities of the Commission in 2008.

Current and projected activities of the various Departments, their achievements, the general rescue operations of the field Commands and policy plans of the Corps for the year 2009 are outlined in this report.

Notable achievements for the year 2008 are contained in the report and photo gallery which illustrates the activities of different Corps Offices and formations of the Commission in the year under review is also incorporated in the report.



## **POLICY AND PLANS FOR THE YEAR 2009**

- a. Conduct the second batch of ISO 9000:2000 System Auditor courses in the first quarter of 2009.
- b. Put in place necessary arrangements to ensure that the ISO:2000 certification of the Commission in September, 2009 is a reality.
- c. Ensure periodically, adherence to internal control and Quality Management System
- d. Determine the percentage or level of enforcement of the Commission's statutory responsibilities as contained in FRSC (Establishment) Act 2007 and National Road Traffic Regulation, 2004.
- e. Collate, evaluate and monitor performance of set targets in the Commission.

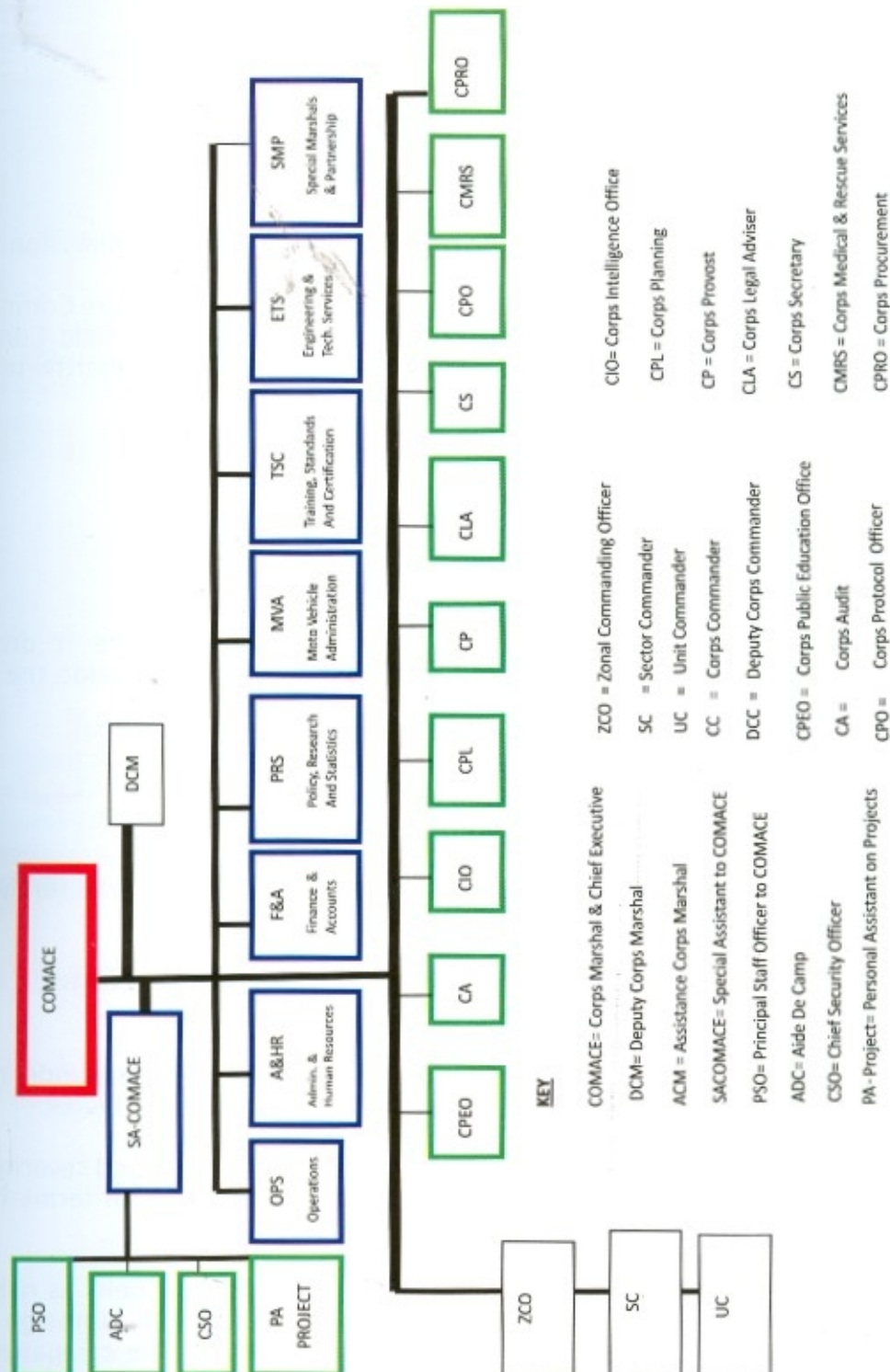
## **GENERAL ORGANIZATION AND ADMINISTRATION OF THE CORPS**

Modern organizational management seeks to achieve greater efficiency of operations and reduce supervision through division of job functions into smaller related areas of specialization.

The Federal Road Safety Commission has also evolved similar principles of bringing together related job functions.

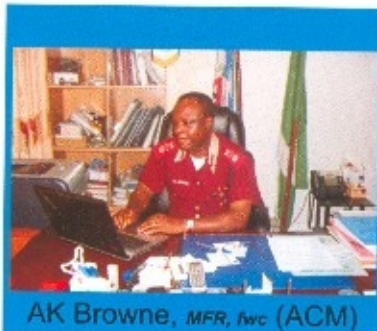
The Commission has a total of eight (8) Departments, Ten (10) Corps Offices and other special Sections and Units.

# GENERAL ORGANIZATION AND ADMINISTRATION OF THE CORPS





## OPERATIONS DEPARTMENT



AK Browne, MFR, hwc (ACM)

The Department of Operations is one of the eight (8) Departments in the Commission.

The Department has the responsibility for the overall coordination of the entire Commission's operational activities. This it does through the issuance of guidelines to field Commands' activities throughout the country. The specific functions of operations Department include the following

- a. Initiation of operational policies and plans for the Commission
- b. Supervision of the activities of all Zones, Sectors and Unit Commands
- c. Coordination of all operational activities of the Commission
- d. In conjunction with Corps Marshal and Chief Executive's office it deals with correspondences from various tiers of governments both within and outside the country which are of operational nature.
- e. Carry out prompt removal of obstructions on the highways.
- f. Conduct special Mobile Courts for traffic offenders, nationwide
- g. Interface with other agencies, organizations and government at all levels for the Promotion of road safety in Nigeria.
- h. Any other duties as may assigned by the Corps Marshal and Chief Executive

### PROGRAMS AND ACHIEVEMENTS

The Department executed a number of activities and programs within the year under review. Some of these programs and achievements executed in 2008 are discussed below:

- a. The Department has sustained continued reduction in the number and severity of road crashes in Nigeria, hence the country has recorded marginal decline, in terms of traffic crashes and their severity.
- b. Having mapped the problem of overloading and non-use of seat belts as risk factors requiring special intervention, the Department embarked on special campaign against overloading code-named "Total War against Overloading" (TOWOL). The campaign, Which involved public education, highway patrol, and mobile court, took the Department to all the States of the federation for enforcement.

c. The Department successfully organized the 2008 FRSC "ember months" campaign flag-off simultaneously in all the state capitals in Nigeria. It used the opportunity of the program to advance the road safety campaign and galvanized support for FRSC from state governments, various stakeholders and other public agencies. The campaign resulted in pronouncements and donation of patrol vehicles and other equipment to FRSC by various state governments.

d. Establishment of database of fleet operators in Nigeria. The RTSSS Section of the Department has continued with the upgrading of a databank on the existing transport fleet operators in Nigeria for formal registration. The robust databank is required for the smooth administration of the RTSSS and fleet regulation in Nigeria.

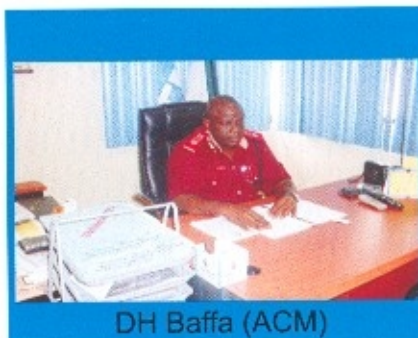
e. Further to the outcome of a stakeholders meeting, various consultations and agreements were reached in principle, as a result, the Department is presently preparing a draft regulatory document for tankers and trailer drivers in Nigeria.

f. 'Operation Eagle Eye' 2008, coming against the background of the gains of similar exercise in 2007, the Department had its annual special patrol operation code named "Operation Eagle Eye". The exercise is primarily designed to ease traffic congestion on congestion-prone locations, increase operational presence in selected black spots locations and ensure easy and safe passage of commuters during the festive periods.

g. Review and production of new FRSC notice of offence document.



## ADMINISTRATION AND HUMAN RESOURCES DEPARTMENT



DH Baffa (ACM)

The Administration and Human Resources Department is divided into three (3) major Sections each headed by a Head of section viz:

- a. Personnel Section
- b. Administration Section
- c. Pension and Insurance Section

The Sections are sub-divided into Units headed by Heads of Units, who are supported by Staff Officers. The Department is responsible for the management of Marshals records, recruitment promotion and appointment. The Department also manages Staff Pensions as well as Group Personal Accident Insurance Schemes for both Regular and Special Marshals. The Department manages the National Housing Fund Scheme for staff of the Commission and ensures Commissions compliance as well as assists staff contributors to make maximum utilization of the inherent benefits of the scheme.

### ACHIEVEMENTS OF THE DEPARTMENT

- a. The personnel Section has been restructured to carry out its statutory functions. The Registry Unit has been restructured for maximum efficiency which has lead to improved filing system making it possible for files to be retrieved easily from the shelves, while census is regularly conducted to locate files that are receiving attention.
- b. The Personnel Section in liaison with the Management Promotion Board promoted Marshals and rescheduled 1,535 other marshals for promotion examination.
- c. The computerization and upgrading of all Marshals Records in the Registry is over 90% completed and normal update is in progress.
- d. The Discipline Unit has reduced the back log of pending disciplinary cases. Cases are disposed off as determined by duly constituted disciplinary courts and award/punishment or otherwise are also implemented.

e. From January to December, 2008, punishments were awarded as follows:

i.	Major entry	139
ii.	Warning	15
iii.	Minor Entry	12
iv.	Loss of Seniority	07
v.	Reduction in Rank	04
vi.	Termination of Appointment	31
vii.	Dismissal from Service	Nil
viii.	Reinstatement	02
ix.	Severe Reprimand	83
x.	Discharged and Acquitted	41
xi.	Reprimand	08

f. The Housing Co-operative has acquired an estate of ten (10) units of two bedroom houses at Kubwa, two bedrooms and one bedroom block of houses at

### STAFF STRENGTH AS AT DECEMBER, 2008

S/NO	CODE	RANK	CADRE	NO
1	COMACE	CORPS MARSHAL & CHIEF EXECUTIVE	OFFICER	1
2	DCM	DEPUTY CORPS MARSHAL	"	2
3	ACM	ASSISTANT CORPS MARSHAL	"	15
4	CC	CORPS COMMANDER	"	61
5	DCC	DEPUTY CORPS COMMANDER	"	101
6	ACC	ASSISTANT CORPS COMMANDER	"	268
7	CRC	CHIEF ROUTE COMMANDER	"	319
8	SRC	SUPRINTENDENT ROUTE COMMANDER	"	460
9	RC	ROUTE COMMANDER	"	373
10	DRC	DEPUTY ROUTR COMMANDER	"	340
11	ARC	ASSISTANT ROUTE COMMANDER	"	1,847
12	CRM	CHIEF ROAD MARSHAL	MARSHAL	107
13	DCRM	DEPUTY CHIEF ROAD MARSHAL	"	153
14	ACRM	ASSISTANT CHIEF ROAD MARSHAL	"	439
15	PRM	PRINCIPAL ROAD MARSHAL	"	526
16	SRM	SENIOR ROAD MARSHAL	"	790
17	RM I	ROAD MARSHAL I	"	1,376
18	RM II	ROAD MARSHAL II	"	1,230
19	CRMA	CHIEF ROAD MARSHAL ASSISTANT	"	272
20	SRMA	SENIOR ROAD MARSHAL ASSISTANT	"	342
21	RMA I	ROAD MARSHAL ASSISTANT I	"	205
22	RMA II	ROAD MARSHAL ASSISTANT II	"	1,995
23	RMA III	ROAD MARSHAL ASSISTANT III	"	1,276
	TOTAL			12,498





OI Ewhrudjakpor (CC)

Policy, Research and Statistics Department is responsible for policy formulation and evaluations, conducting researches with the aim of utilizing the findings for effective and efficient performance and achievement of the goals of the Commission.

### **POLICY, RESEARCH AND STATISTICS DEPARTMENT (PRS) VISION AND MISSION STATEMENT VISION**

To serve as the think-tank, repository of data and knowledge for Federal Road Safety Commission.

### **MISSION**

Using information and communication technology (ICT) to ensure Robust data Management, Policy and analysis, inter-governmental relations for the achievement of the Commission's corporate Goals.

### **FUNCTIONS OF THE DEPARTMENT**

Other auxiliary responsibilities include:

- a. Collection, collation and processing of data from the field Commands.
- b. Ensuring quality control of all information and data emanating from the Commission.
- c. Custodian of computer, records of personnel, result of researches and other related traffic matters.
- d. Ensures effective management of FRSC library service.
- e. Anchoring of International Conferences, Seminars and workshops.
- F. For effective execution of the above schedules, the Department is structured into Sections and Units. The Policy Section supervises Policy, Bilateral, Monitoring/evaluation, Operations Organization and Management Research (OOMR) Units, while the Research Section oversees Research, Statistics, Library Services and Data Support Services (DSS) units.



**ACHIEVEMENTS**

The Department executed a number of activities and programmes within the year under review. Some of these programmes have been completed while others are of continuous nature, and are currently on-going. Some of the programmes executed are as follows:

- a. International Conference on Road Safety/20th Anniversary. The conference was planned to coincide with the Commission's 20th Anniversary and had over 17 foreign delegates as resource persons and several participants drawn from all the states of the Federation in attendance. The theme of the Conference was "Road Safety Management in Africa: Vision 2020".
- b. Traffic count at selected International Border Post; This was carried out in twenty (20nos) selected border post, across the country. Reports have been sent to FERMA.
- c. World Remembrance Day for Road Traffic Victims; The UN Resolution A/60/5 of 26th October, 2005 adopted 3rd Sunday of November every year for remembering those who lost their lives or sustained injuries from road traffic crashes, evaluating the effect of the burden of RTC, and also looking at ways to forestall future occurrence. The activities for 2008 commemoration included Church services, prayers at the Mosque, Awareness walk and wreath laying at the National Military Cemetery. The Revised Highway Code and the 20th anniversary commemoration stamp were launched as part of the year's commemoration of World Day Remembrance.
- d. Compilation and appointment of Data Information Officers (DIO's.) The DIO's, have been appointed in all Commands within areas of coverage and some Commands have secured office accommodations in the local government Areas.
- e. Monitoring and evaluation of FRSC activities; Monitoring of on going projects at the Headquarters and Field Commands were carried out in all the Information Processing Centers (IPC) work stations nationwide at the last quarter of 2008.
- f. Production of Annual Report; 2007 Annual report for the Commission was produced using input from field Commands and Headquarters. The report contained summary of Road Traffic Crash, achievements of various Departments and Corps Offices.
- g. Two Joint Researches were carried out in conjunction with Unilag Consult/ ITI Projects Services Limited and Geo-Trans Associates. The research topics were respectively the "Study of road furniture on Nigerian roads, its impact on driving culture of Nigerians" and the "level of understanding of road signs and markings by Nigerians, a study of selected cities in Nigeria"..
- h. Inauguration of West African Road Safety Organization (WARSO) by His Excellency Dr. Mohammed Ibn Chambers, President ECOWAS Commission in Abuja with the Corps Marshal and Chief Executive, Federal Road Safety Commission Nigeria as the first President of WARSO.



## FEDERAL ROAD SAFETY COMMISSION

PRS: POLICY, RESEARCH AND STATISTICS DEPARTMENT

## ROAD TRAFFIC ACCIDENT SUMMARY

ANNUAL RTC FIGURES FOR 2008

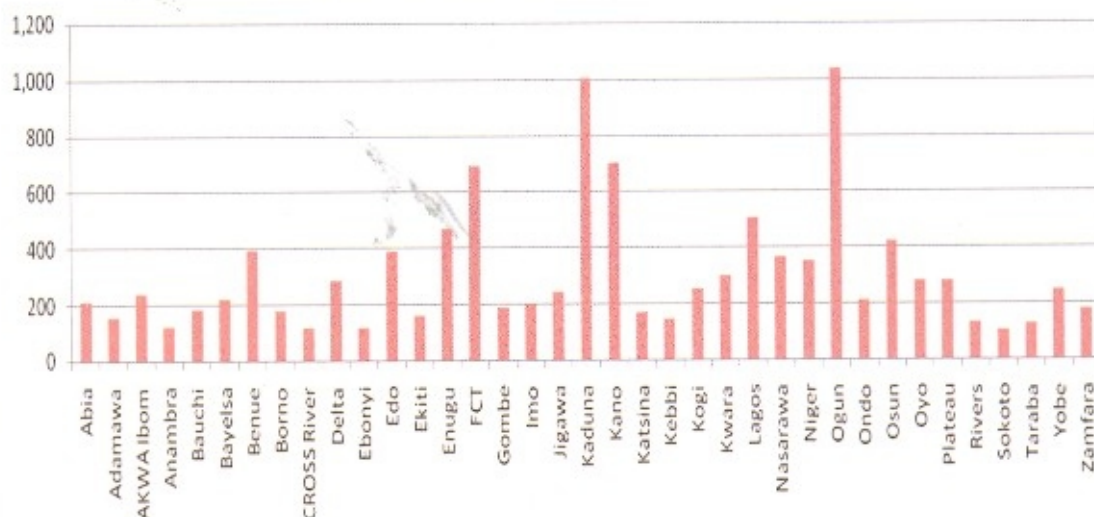
STATE	FATAL CASES	SERIOUS CASES	MINOR CASES	TOTAL CASES	NO OF PERSONS KILLED	NO OF PERSONS INJURED	TOTAL CASUALTY
Abia	27	126	56	209	131	404	535
Adamawa	45	76	32	153	70	322	392
AKWA Ibom	29	141	69	239	188	857	1,045
Anambra	42	60	19	121	59	472	531
Bauchi	71	79	33	183	80	414	494
Bayelsa	34	128	57	219	150	985	1,135
Benue	81	222	91	394	279	969	1,248
Borno	49	93	34	176	90	227	317
CROSS River	50	52	16	118	39	955	994
Delta	82	140	62	284	171	454	625
Ebonyi	27	61	28	116	63	335	398
Edo	113	188	86	387	247	869	1,116
Ekiti	35	91	34	160	88	468	556
Enugu	50	311	107	468	331	1,927	2,258
FCT	181	333	176	690	390	1,086	1,476
Gombe	37	106	44	187	97	2,065	2,162
Imo	29	122	47	198	129	662	791
Jigawa	74	121	46	241	126	895	1,021

## POLICY, RESEARCH AND STATISTICS DEPARTMENT

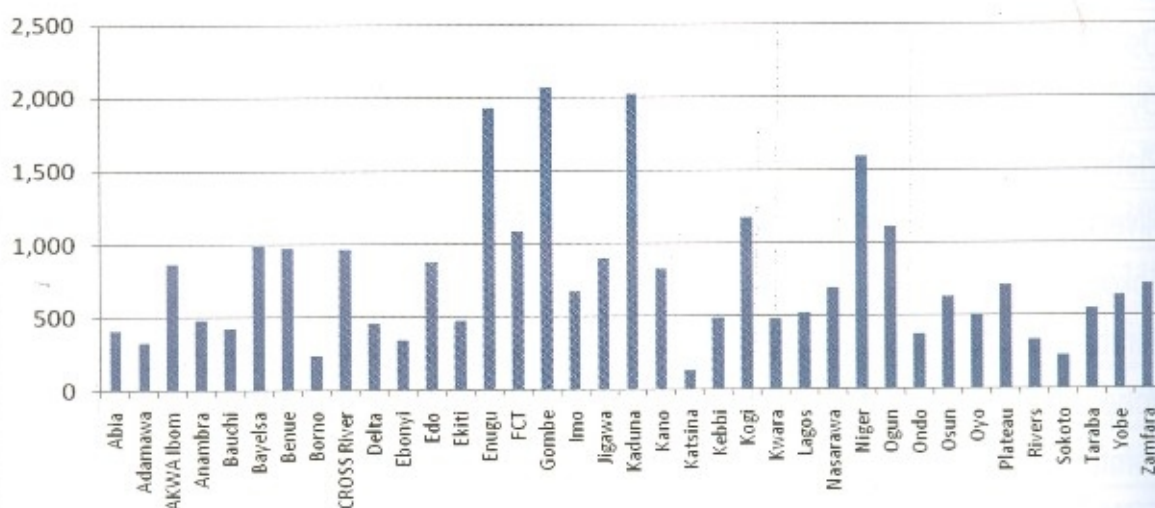
STATE	FATAL CASES	SERIOUS CASES	MINOR CASES	TOTAL CASES	NO OF PERSONS KILLED	NO OF PERSONS INJURED	TOTAL CASUALTY
Kaduna	177	523	303	1,003	692	2,017	2,709
Kano	131	368	200	699	446	816	1,262
Katsina	120	37	10	167	34	124	158
Kebbi	24	88	34	146	82	481	563
Kogi	52	137	61	250	165	1,173	1,338
Kwara	83	145	72	300	199	474	673
Lagos	364	100	39	503	90	519	609
Nasarawa	69	208	89	366	264	687	951
Niger	106	162	81	349	226	1,589	1,815
Ogun	373	392	272	1,037	517	1,106	1,623
Ondo	58	106	45	209	123	365	488
Osun	102	228	92	422	286	620	906
Oyo	77	140	62	279	168	504	672
Plateau	48	156	75	279	209	702	911
Rivers	37	68	28	133	64	325	389
Sokoto	30	54	20	104	43	225	268
Taraba	29	70	28	127	68	539	607
Yobe	54	135	57	246	160	635	795
Zamfara	34	104	41	179	97	713	810
GRAND TOTAL	3,024	5,671	2,646	11,341	6,661	27,980	34,641



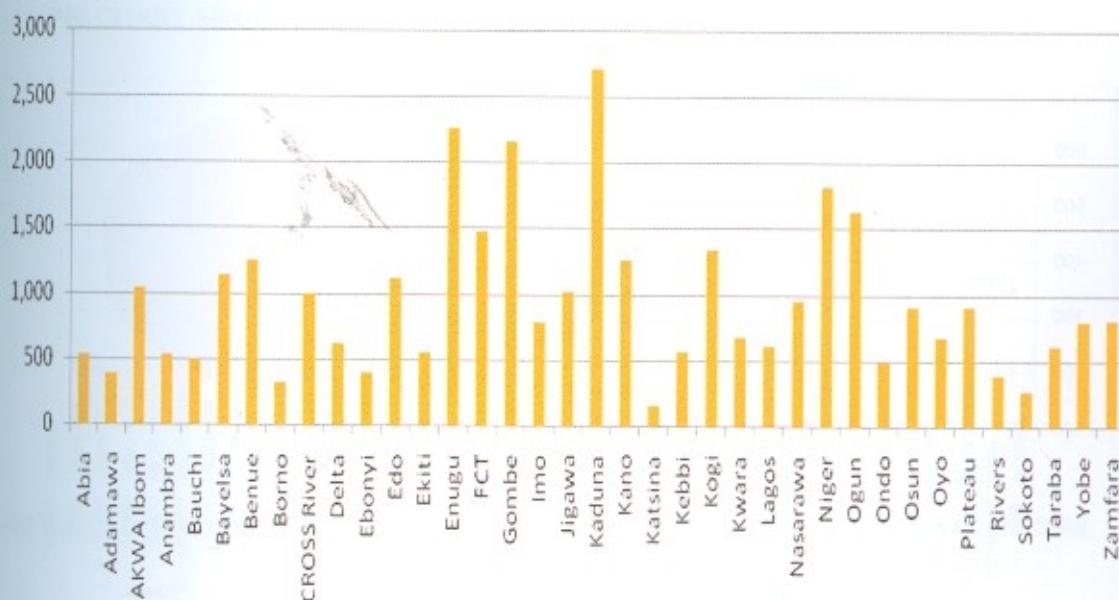
**TOTAL CASES ON STATE BASIS IN 2008**



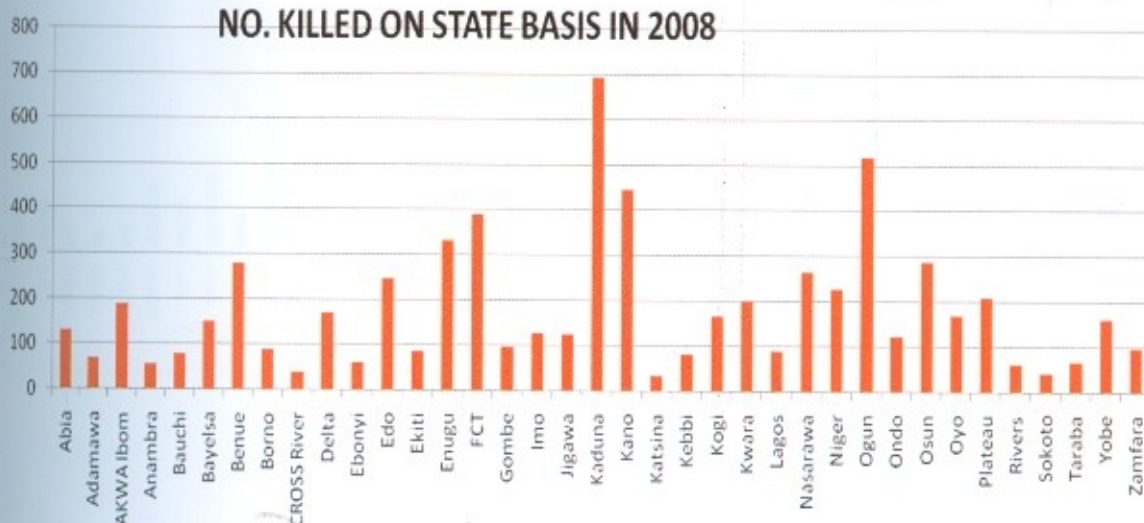
**NO. INJURED ON STATE BASIS IN 2008**



TOTAL CASUALTY ON STATE BASIS IN 2008

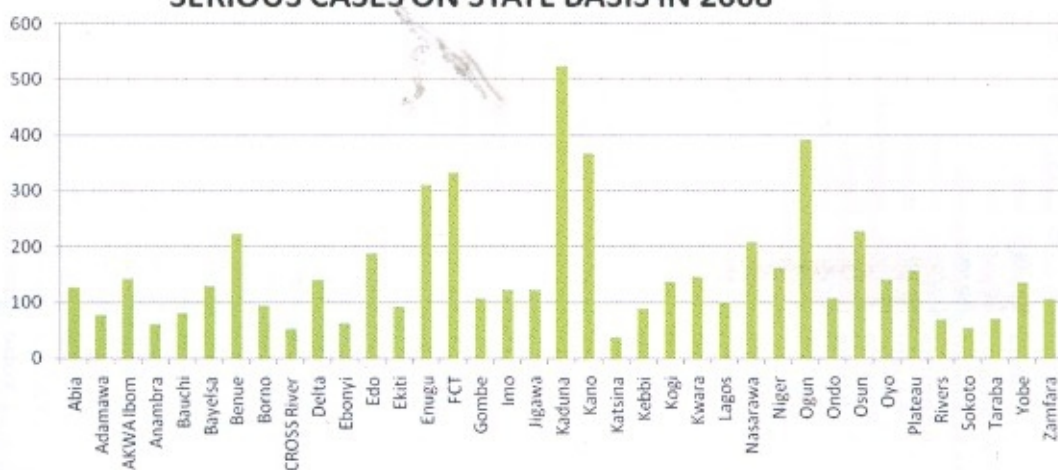


NO. KILLED ON STATE BASIS IN 2008

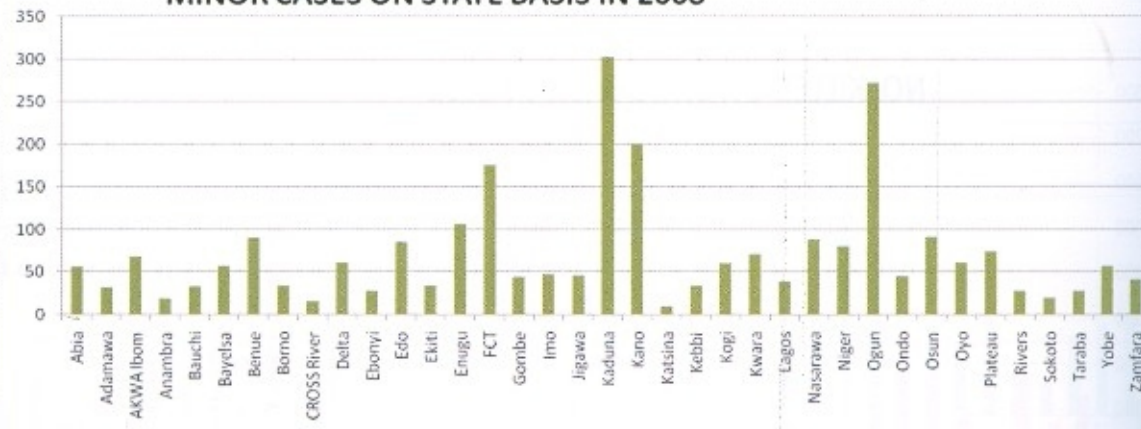




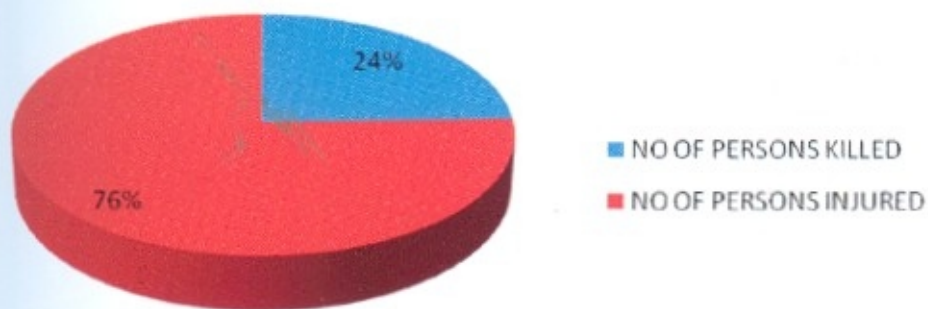
SERIOUS CASES ON STATE BASIS IN 2008



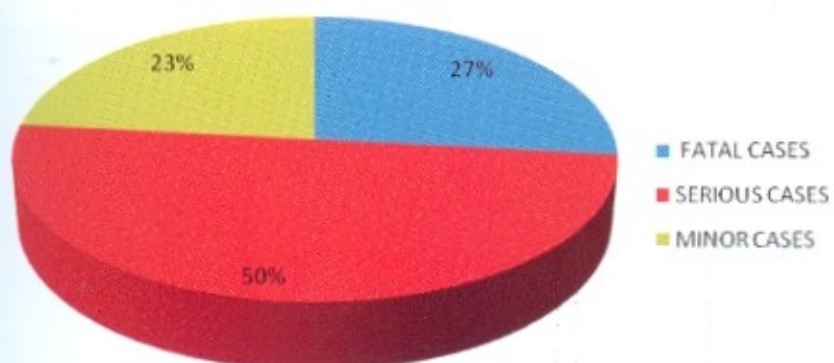
MINOR CASES ON STATE BASIS IN 2008



PIE CHART SHOWING PERCENTAGE OF PERSONS KILLED/INJURED IN 2008



PIE CART SHOWING PERCENTAGE OF FATAL, SERIOUS AND MINOR CASES IN 2008







DCM Uba Hassan and ACM DH Baffa praying at the National Mosque, Abuja during Remembrance of Road Traffic Crash Victims.



Prayers at the National Mosque Abuja during the 2008 World Traffic Crash Victims Remembrance Day.



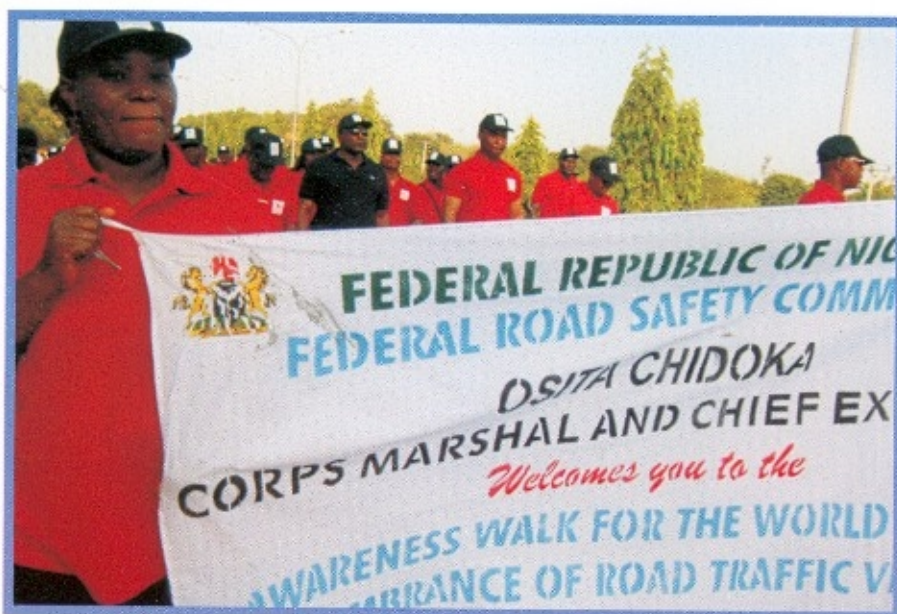


The Corps Marshal and Chief Executive Federal Road Safety Commission shaking hands with Representative of the Chief of Defense Staff during the Church service at the World Remembrance Day of Road Traffic Crash Victims.



Road Safety Officers Wives Association (ROSOWA) at a Church service during the Road Traffic Crash Victims World Remembrance Day.





Awareness Walk for the World Day Remembrance of Road Traffic Victims along Airport road Abuja.



One of Widows of Road Traffic Crash Victims, about to lay wreath at the National Military Cemetery Abuja during the World Road Traffic Crash Remembrance Day.





The Corps Marshal and Chief Executive, Federal Road Safety Commission laying wreath at the National Military Cemetery, Abuja during the World Remembrance Day of Road Traffic Crash Victims.



The Corps Marshal and Chief Executive, Federal Road Safety Commission leading some Senior Officers of the Corps after a church service in, Abuja during the World Remembrance Day of Road Traffic Crash Victims.



## MOTOR VEHICLE ADMINISTRATION DEPARTMENT



H Haruna (ACM)

The Motor Vehicle Administration Department (MVA) is saddled with the responsibility of initiating and implementing safe driving culture. The Department is structured to cover the following areas:

- a. National Vehicle Identification Scheme (NVIS)
- b. Enhanced National Driver's License Scheme (ENDLS)
- c. NDL System Maintenance
- d. Monitoring/Audit Trail
- e. Motor Vehicle Registration Scheme (MVRS)
- f. MVA Data
- g. General Administration

### NATIONAL DRIVER'S LICENCE

This is a tripartite arrangement with other agencies viz V.I.O and States Boards of Internal Revenue. In line with this arrangement, FRSC is concerned with the design and production of NDL.

### MOTOR VEHICLE REGISTRATION

This unit is charged with the distribution of Base Stock to all FRSC Information Processing Centers (IPC) nationwide. It also addresses the true ownership of Vehicles Nationwide using the proof of ownership certificate (POC). It also looks into matters of common interest with other stakeholders like Boards of Internal Revenue in the various states of the Federation (BIR) and VIO.

### MVA MONITORING UNIT

The Unit initiates and carries out monitoring of FRSC Information Processing Centre's (IPC)/Number Plate Replacement Centres.

### MVA DATA

This Unit is vested with the collation of data based on the Information in the monthly reports from FRSC Information Processing Centre's nationwide.

### ACHIEVEMENTS OF MVA DEPARTMENT

- a. Repairs of System Software for FRSC Information Processing Centre's (IPC'S)
- b. Distribution of base stock to all the IPC'S Centre's nationwide.
- c. Regular submission of reports from the Zones and prompt analysis for future planning.
- d. Analyzes the work of Zonal Replacement Centres for Management decision making.

## MOTOR VEHICLE ADMINISTRATION DEPARTMENT

### NATIONAL UNIFORM LICENSING SCHEME (NULS) ENHANCED NATIONAL DRIVERS LICENSE (ENDL) ENDL PROCESSED, JANUARY TO DECEMBER, 2008

S/NO	STATE	QUANTITY PROCESSED
1	ABIA	6,736
2	ADAMAWA	4,918
3	AKWA- IBOM	6,088
4	ANAMBRA	9,696
5	BAUCHI	7,193
6	BAYELSA	5,382
7	BENUE	6,828
8	BORNO	5,574
9	CROSS-RIVER	3,153
10	DELTA	12,317
11	EBONYI	6,185
12	EDO	6,393
13	EKITI	5,695
14	ENUGU	1,925
15	FCT	18,488
16	GOMBE	7,085
17	IMO	10,418
18	JIGAWA	2,673
19	KADUNA	10,132
20	KANO	18,373
21	KATSINA	5,210
22	KEBBI	1,996
23	KOGI	7,089
24	KWARA	5,351
25	LAGOS	21,870
26	NASARAWA	9,123
27	NIGER	4,812
28	OGUN	10,344
29	ONDO	6,326
30	OSUN	7,803
31	OYO	9,431
32	PLATEAU	11,626
33	RIVERS	4,679
34	SOKOTO	6,792
35	TARABA	2,023
36	YOBE	2,895
37	ZAMFARA	4,447
38	<b>TOTAL</b>	<b>277,078</b>



## MOTOR VEHICLE ADMINISTRATION DEPARTMENT

### COMPREHENSIVE YEAR 2008 NUMBER PLATE PRODUCTION ANALYSIS

#### CATEGORY A: QUARTERLY PRODUCTION OF MOTOR VEHICLE NUMBER PLATE

CATEGORY	1 <sup>ST</sup> Quarter (Jan-Mar. 2008)	2 <sup>ND</sup> Quarter (Apr. - June 2008)	3 <sup>RD</sup> Quarter (July- Sept. 2008)	4th Quarter (Oct-Dec. 2008)	Year 2008 Total
Govt. Motor Vehicle	2,080	3,112	3,222	5,074	13,488
Govt. Articulated	0	0	0	0	0
Private Motor Vehicle	27,271	99,887	46,206	88,311	261,495
Commercial Motor Vehicle	6,880	38,091	13,814	23,520	82,305
Articulated	0	0	0	22	22
Fancy	281	296	207	250	1,034
Out of Series	238	428	273	1	1,400
Military/Paramilitary	82	230	407	559	1,251
Diplomatic	14	44	4	401	471
Dealer	38	82	40	309	469
SUB TOTAL	36,884	142,160	64,173	118,718	361,935

## MOTOR VEHICLE ADMINISTRATION DEPARTMENT

### CATEGORY B: QUARTERLY PRODUCTION OF MOTORCYCLE PLATE NUMBER

Got. M/Cycle	482	795	1,752	858	3,887
Private Motor Cycle	85,167	102,516	127,036	83,609	398,328
Commercial Motor Cycle	12,762	30,760	28,525	20,672	92,719
Military/ Paramilitary Motorcycle	403	0	0	201	604
Dealer	0	0	4	0	4
<b>SUB TOTAL</b>	<b>98,814</b>	<b>134,071</b>	<b>157,317</b>	<b>105,340</b>	<b>495,542</b>

### CATEGORY C: QUARTERLY PRODUCTION OF REPRINT

S/NO	STATES AND AGENCIES	MOTOR VEHICLE
1	FCT	77,734
2	EKITI	38,419
3	ENUGU	16,836
4	KANO	13,596
5	EDO	10,794
6	DELTA	10,119
7	RIVERS	9,287
8	IMO	9,180
9	OYO	8,843
10	NIGER	8,713
11	ONDO	8,301



## MOTOR VEHICLE ADMINISTRATION DEPARTMENT

12	ABIA	7,113
13	JIGAWA	6,646
14	KATSINA	6,482
15	ANAMBRA	6,452
16	OSUN	6,058
17	FEDERAL GOVERNMENT	6,043
18	BENUE	5,731
19	BAUCHI	5,380
20	ADAMAWA	4,981
21	KEBBI	4,961
22	KADUNA	4,896
23	PLATEAU	4,837
24	SOKOTO	4,594
25	CROSS-RIVER	4,312
26	EBONYI	4,178
27	YOBE	4,051
28	LAGOS	4,013
29	AKWA-IBOM	3,916
30	KOGI	3,704
31	BORNO	3,518
32	BAYELSA	3,281
33	TARABA	2,663
34	OGUN	2,410
35	GOMBE	2,115

## MOTOR VEHICLE ADMINISTRATION DEPARTMENT

36	KWARA	1,642
37	ZAMFARA	997
38	NASARAWA	934
39	PARA-MILITARY	632
40	DIPLOMATIC	228
	<b>TOTAL</b>	<b>333,579</b>



## TRAINING, STANDARDS, AND CERTIFICATION DEPARTMENT



BO Oyeyemi, MFR (ACM)

The Department of Training, Standards and Certification prior to march 2008 was known as Department of Training Headquarters and supervised the academy in Jos and Training school in Mubi.

The Department is headed by an Assistant Corps Marshal.

To achieve set Departmental goals, a clear cut vision and mission was necessary. To this effect, the Department put in place its vision and mission statements to serve as guidelines, and remind it of its mandatory service delivery. The adopted vision and mission statements are as follows:

### **Vision statement**

To bring about a well motivated, skilled, agile, knowledgeable and efficient workforce that is trustworthy, reliable but also dependable and appreciable in contemporary world best practices in road traffic administration.

### **Mission statement**

To evolve for the commission desired capacity building through effective use of standards and certifiable modules thereby becoming the proposed vehicle that will bring about improved quality of members of the corps and by extension a healthy and visionary organization one of envy among peers internally and in the comity of nations.

### **ACHIEVEMENTS**

- a. Tremendous capacity building occurred across all ranks in the year under review. The FRSC Academy and the Training school were stretched to the full as both Institutions witnessed constant inflow and outflow of Trainees regularly.

- b. Also, within the year the Officers attended eighteen (18) foreign courses involving thirty seven of them.
- c. Nine hundred and ninety seven (997) Marshals attended thirteen (13) courses within the year. The Training School anchored five (5) of the courses that involved nine hundred and thirty seven (937) Marshals and were assessed at the end of the contact period
- d. The project on the introduction of Road Safety Education into the curricula of primary and Junior Secondary Schools was resuscitated in the course of 2008.
- e. The Driving Schools Standardization Programme which is the Commissions approach towards ensuring that driving schools were properly regulated in Nigeria such that instructions from the schools will conform to the guidelines of modern day driving culture.
- f. FRSC won Gold And Bronze medals in the singles and double events at the West African University Games.
- g. The male team of FRSC handball popularly known as Safety Shooters, emerged 2<sup>nd</sup> Runner ups and female team Safety Babes took first position at the super six Handball Championship Chief Servant Cup in Minna Niger State.
- h. The FRSC Football club began its campaign in the National Division one Amateur League in November, 2008. The club had played a total of five (5) matches, won three (3) and lost two (2)

**SUMMARY TABLE FOR 2008 FURTHER STUDIES**

BATCHES	NUMBER APPLIED		QUALIFIED/GRANTED		NOT QUALIFIED	
	OFFICERS	MARSHALS	OFFICERS	MARSHALS	OFFICERS	MARSHALS
BATCH A	46	367	42	294	4	73
BATCH B	51	212	-	134	51	78
BATCH C	21	105	13	62	8	43
TOTAL	118	684	55	490	63	194



## ENGINEERING AND TECHNICAL SERVICES DEPARTMENT

The Engineering and Technical Services Department is one of the eight (8) Departments in FRSC which is saddled with the responsibility of providing Technical Services for the Commission. The Department is administratively divided into two (2) sections viz:

- a. Technical Section
- b. Engineering Section

### Technical Section

This section is headed by HOS Technical and is charged with the following responsibilities:

- a. Estate Development
- b. Estate Administration
- c. Estate Maintenance

### Engineering Section

The engineering section is headed by HOS Engineering and is charged with the following responsibilities:

- a. Electrical Maintenance
- b. Vehicle Maintenance
- c. Transport/Vehicle Administration
- d. Utilities
- e. Fire/Safety

Both the Technical and Engineering Sections, report directly to the Deputy Corps Marshal (DCM) Engineering and Technical Services who heads and administers the Department.

### FUNCTIONS OF ENGINEERING AND TECHNICAL SERVICES

- a. Estate purchase and Development.
- b. Estate administration and maintenance.
- c. Transport/vehicle administration.
- d. Electrical repairs/maintenance.
- e. Vehicle maintenance.
- f. Utilities (water, power and communication.
- g. Fire/Safety administration and maintenance.
- h. Any other responsibilities as may be assigned by the Corps Marshal and Chief Executive.

### ACHIEVEMENTS OF THE DEPARTMENT

- a. Boarded a total of one hundred and twenty nine (129) unserviceable vehicles and nineteen (19) unserviceable bikes out of the approved one hundred and thirty five (135) and twenty one (21) unserviceable vehicles and bikes.
- b. Purchased of two hundred and twelve (212) vehicles as follows:
  - a. Toyota Avensis saloon cars 10
  - ii. M/Bushi canter 01
  - iii. Toyota Hilux p/up 10

## ENGINEERING AND TECHNICAL SERVICES DEPARTMENT

iv.	M/Benz (9170) tow trucks	02
v.	Toyota coaster	01
vi.	M/Benz (1721) city bus	02
vii.	PGT 406	02
viii.	PGT 407 saloon car	01
ix.	PGT Expert kombi	01
x.	Ford Ranger Double cabin	182
xi.	Purchased bikes	140

### LIST OF VEHICLES DONATED TO FRSC IN 2008

s/n	Reg. number	Make/Type	Model	Engen. Number	Chassis number	Location
1	RS527 A01	TYT HILUX	P/UP			BAYELSA
2	RS529 A01	Ford Rang.	, ,		682392	BAUCHI
3	FL83MGT	TYT HLIX	, ,	G80950149 2		NASS U/C
4	RS531 A01	KIA Cerato	Saloon car	G4FC6U06 7334	FE22773 94469	EDO S/C
5	RS532 A01	PGT505 AMB	S/W	ES	F110344 1104	SOKOTO
6	RS0295HQ	PGT 406	Saloon car	-	-	ZAMFARA
7	RS537 A01	NISSAN	P/UP	-	-	ZAMFARA
8	RS538 A01	TYT REGIUS	BUS	-	-	ZAMFARA
9	RS539 A01	TYT HILUX	P/UP	2TR- FE2694	-	ZAMFARA
10	RS0296HQ	HONDA ACCORD	Saloon car	S118043	125066	SOKOTO
11	RS540 A01	Ambulance	-	-	-	UYO S/C
12	RS541 A01	Ambulance	-	-	-	UYO S/C
13	RS542 A01	-	-	-	-	LAGOS
14	RS543 A01	-	-	-	-	LAGOS
15	RS544 A01	TYT HILUX	P/UP	6430674ZT R	2G48130 5150	LAGOS
16	RS545 A01	-	-	-	-	LAGOS
17	RS549 A01	TYT HILUX	P/UP	8097393	0800363 6	EKITI S/C
18	RS554 A01	PGT505	S/W	-	-	S/NAKA
19	RS555 A01	Ford Ranger	4x4	-	-	AWKA S/C
20	RS556 A01	Ford Ranger	4x4	-	-	AWKA S/C



## ENGINEERING AND TECHNICAL SERVICES DEPARTMENT

The Engineering and Technical Services Department is one of the eight (8) Departments in FRSC which is saddled with the responsibility of providing Technical Services for the Commission. The Department is administratively divided into two (2) sections viz:

- a. Technical Section
- b. Engineering Section

### Technical Section

This section is headed by HOS Technical and is charged with the following responsibilities:

- a. Estate Development
- b. Estate Administration
- c. Estate Maintenance

### Engineering Section

The engineering section is headed by HOS Engineering and is charged with the following responsibilities:

- a. Electrical Maintenance
- b. Vehicle Maintenance
- c. Transport/Vehicle Administration
- d. Utilities
- e. Fire/Safety

Both the Technical and Engineering Sections, report directly to the Deputy Corps Marshal (DCM) Engineering and Technical Services who heads and administers the Department.

### FUNCTIONS OF ENGINEERING AND TECHNICAL SERVICES

- a. Estate purchase and Development.
- b. Estate administration and maintenance.
- c. Transport/vehicle administration.
- d. Electrical repairs/maintenance.
- e. Vehicle maintenance.
- f. Utilities (water, power and communication).
- g. Fire/Safety administration and maintenance.
- h. Any other responsibilities as may be assigned by the Corps Marshal and Chief Executive.

### ACHIEVEMENTS OF THE DEPARTMENT

- a. Boarded a total of one hundred and twenty nine (129) unserviceable vehicles and nineteen (19) unserviceable bikes out of the approved one hundred and thirty five (135) and twenty one (21) unserviceable vehicles and bikes.

- b. Purchased of two hundred and twelve (212) vehicles as follows:

a.	Toyota Avensis saloon cars	10
ii.	M/Bushi canter	01
iii.	Toyota Hilux p/up	10

## ENGINEERING AND TECHNICAL SERVICES DEPARTMENT

iv.	M/Benz (9170) tow trucks	02
v.	Toyota coaster	01
vi.	M/Benz (1721) city bus	02
vii.	PGT 406	02
viii.	PGT 407 saloon car	01
ix.	PGT Expert kombi	01
x.	Ford Ranger Double cabin	182
xi.	Purchased bikes	140

### LIST OF VEHICLES DONATED TO FRSC IN 2008

s/n	Reg. number	Make/Type	Model	Engen. Number	Chassis number	Location
1	RS527 A01	TYT HILUX	P/UP			BAYELSA
2	RS529 A01	Ford Rang.	,,		682392	BAUCHI
3	FL83MGT	TYT HLIX	,,	G80950149 2		NASS U/C
4	RS531 A01	KIA Cerato	Saloon car	G4FC6U06 7334	FE22773 94469	EDO S/C
5	RS532 A01	PGT505 AMB	S/W	ES	F110344 1104	SOKOTO
6	RS0295HQ	PGT 406	Saloon car	-	-	ZAMFARA
7	RS537 A01	NISSAN	P/UP	-	-	ZAMFARA
8	RS538 A01	TYT REGIUS	BUS	-	-	ZAMFARA
9	RS539 A01	TYT HILUX	P/UP	2TR- FE2694	-	ZAMFARA
10	RS0296HQ	HONDA ACCORD	Saloon car	S118043	125066	SOKOTO
11	RS540 A01	Ambulance	-	-	-	UYO S/C
12	RS541 A01	Ambulance	-	-	-	UYO S/C
13	RS542 A01	-	-	-	-	LAGOS
14	RS543 A01	-	-	-	-	LAGOS
15	RS544 A01	TYT HILUX	P/UP	6430674ZT R	2G48130 5150	LAGOS
16	RS545 A01	-	-	-	-	LAGOS
17	RS549 A01	TYT HILUX	P/UP	8097393	0800363 6	EKITI S/C
18	RS554 A01	PGT505	S/W	-	-	S/NAKA
19	RS555 A01	Ford Ranger	4x4	-	-	AWKA S/C
20	RS556 A01	Ford Ranger	4x4	-	-	AWKA S/C



## SPECIAL MARSHALS AND PARTNERSHIP DEPARTMENT



OE Anyaoku (ACM)

### SPECIAL MARSHALS AND PARTNERSHIP DEPARTMENT

The Special Marshals and Partnership Department was established in 2003 and is saddled with the responsibility of forging alliances, cooperation and partnership with individuals, corporate bodies, government and non-governmental organizations (NGO)

Special Marshals programmes and activities have been part and parcel of the Commission since inception of the organization. Interestingly, the Commission is the only government agency that has been working hand in hand with the largest and formidable volunteer force known as Special Marshals.

The Department sources and maintains partnership with stakeholders on Road Safety matters. The Special Marshals enrolment has increased from 7,000 to 12,000 members as at December, 2008.

The Department Instituted surveillance to ensure that the conduct of Special Marshals on the highway is in accordance with the Operational Guidelines.

## FINANCE AND ACCOUNTS DEPARTMENT



O Jatto (ACM)

### FINANCE AND ACCOUNTS DEPARTMENT

The Department of Finance and Accounts has two (2) Sections; namely Finance and Accounts which are separately headed by Heads of Section. The Department is basically assigned with the function of managing the financial portfolio of the Commission.

Other essential services rendered by the Department include, Receipt of contract registration fees from prospective Contractors, compilation and payment of monthly allocation subject to the approval of COMACE, payment of Staff salaries and allowances and payment of contractors. The Department also manages the database of FRSC wage bills and liaises with the Federal Ministry of Finance on the running cost release such as Overhead, Capital, Personnel etc. Salary variation Unit justifies reasons for necessary changes in monthly wage bills.

#### ACHIEVEMENT

In spite of the scarcity of logistics during the year under review, the Department recorded jumbo-sized achievements in all ramifications. The introduction of e-payment for the monthly salary, being anchored by the United Bank for Africa (UBA) Plc was fully improved upon, albeit with very minimal data problems.

For the first time in the history of the Commission since the past 10 years, Finance and Accounts Department achieved 90% access and utilization of its capital grant in 2008.



## CORPS OFFICES



AA Omidiji (ACM)

### CORPS PLANNING OFFICE

Corps Planning Office was established in 2008, in the office of the Corps Marshal and Chief Executive. The office is charged with the responsibilities of determining development plan (Rolling, Medium and Perspective) and prepares the Commission's budget in conjunction with other departments.

Corps planning office is also responsible for monitoring and evaluation of FRSC activities and plan implementation. It supervises the Secretariat of Tender's Board and ensures regular organization of Conferences and Seminars.

Corps Planning Office sorts and monitors the performance and efficiency target for the Departments and Corps Offices.

### ACHIEVEMENTS

- a. As part of requirements for the implementation of the ISO 9000:2000 a one- day Management Brief was organized for FRSC Management team in March 2008. The brief on the concept of Quality Management System and its relevance to FRSC was conducted by the Standard Organization of Nigeria (SON).
- b. A well attended and highly successful management retreat was organized by A&HR and the Corps Planning. The retreat was held for FRSC management team and Commanding officers with renowned resource persons.
- c. A workshop on strategic Planning and Policy was organized at Digital Bridge Institute of Management for Staff Master Plan Committee and ISO Quality Management System (QMS) trainees.
- d. Trained ISO 9000:2000 FRSC Officers conducted awareness lectures in all the Sector Commands as part of the implementation process for ISO certification.

## CORPS OFFICES



CD Nwachukwu, Esq (ACM)

### CORPS LEGAL ADVISER (CLA)

The FRSC was established under a legal framework based on CAP 141 laws of the Federation of Nigeria 1990 which incorporated the enabling Decree No.45 of 1988 as amended by Decree No.35 of 1992. This Decree No.35 of 1992 has been replaced by the FRSC (Establishment) Act 2007 signed into law on 25th May 2007. The FRSC as a legal entity operates according to the law establishing it, the constitution of Nigeria 1999 and any other law and regulations connected to its responsibilities. In order to ensure that the Commission operates on the path of the law, a Legal Unit was established in 1995.

#### FUNCTIONS

- a. Legal Office drafts all contractual and tenancy agreements involving the Commission and contractors including landlords
- b. The Legal Office defends the Commission in court and also prosecutes traffic offenders in courts.
- c. The Legal Officers liaise with external solicitors retained by the Commission as and when necessary.
- d. The Corps legal Office reviews the laws and regulations of the Commission from time to time and prepares amendments to the law. The Corps legal office being an integral part of the FRSC has enjoyed healthy inter agency cooperation from the Nigeria Police Force, the Armed Forces, Vehicle Inspection Officers (VIO), Ministry of Justice, National Assembly, and Office of the Head of Service of the Federation, Civil Service, and Human Rights Commission etc.

#### UPDATE ON LITIGATIONS

The Litigation Unit treated a total of 54 Civil and criminal cases. 30 Civil cases were treated in 8 zones nationwide and 2 of these cases were referred to External Solicitors who are handling the matters diligently. 24 Criminal Cases are ongoing in 6 zones and are being handled by the Police.

The Corps Legal Office prosecuted over 10,000 traffic infractions using the Mobile Courts in all the 12 Zones in the year 2008.

#### LEGAL DRAFTING AND CONVENIENCE UNIT

The Unit prepared about 56 tenancy and supply agreements for execution in the year under review. The Commission as at the year 2008 had five External Solicitors on retainer ship for handling of cases and inputs on legal matters. The FDC had about 42 cases referred for review; these cases were reviewed and forwarded to Management for further action.

#### ACHIEVEMENTS

- a. Amendment of regulations, conditions of Service and Scheme of Service of the Commission.
- b. Preparation of valid legal documents including agreements and building of cordial relationship between the Commission and the Bar
- c. Liaison with the retained External Solicitors for prosecution of the Commission's matters
- d. Successful legal advice to COMACE, Management and staff of the Commission.



## CORPS OFFICES



S Maku (CC)

### CORPS INTELLIGENCE OFFICE

The Corps Intelligence Office was established in 1996 following the restructuring of the Commission in order to enhance her responsiveness to the statutory functions. Corps Intelligence Office is charged with the responsibility of gathering and processing of intelligence valued reports in the drive towards stabilizing the FRSC system for effective performance of its statutory duties. Its security role revolves around the evolvement of effective machinery for the protection of life, property, information and checking developments that have the capacity of threatening a peaceful environment needed for the pursuit of lawful duties. The details of the Corps Intelligence functions revolve around the following:

- a. Investigation
- b. Monitoring
- c. Surveillance and Vetting
- d. Information gathering and Threat Assessment
- e. Inter-Security agency Liaison.

### ACHIEVEMENTS

The Corps Intelligence Office has within the year under review, achieved amongst the following:

- a. The effective control of bad press as it affects FRSC, following well planned operations which lead to the arrest of the defaulters in conjunction with the Nigeria Police. It is not in doubt that the Commission witnessed a cessation of bad press in 2008.
- b. Carried out various investigation activities to resolve issues which border on discipline across the field Commands, operational misconducts, misappropriation/mismanagement and general misconducts prejudicial to accepted ethics.
- c. Stabilizing the system through effective monitoring of staff and their level of compliance with accepted ethics in the course of their duty through its proactive content, whereby staff stays in line to avoid falling victims to the punitive actions of the Corps Intelligence Office of any contravention.
- d. General threat assessment of developments having the capacity of undermining the safety of staff and the Commission in general and recommending counter measures especially in the area of intending mob attacks in the course of enforcing road traffic regulations
- e. Recommended the establishment of Joint Military/Security Services, Academy and Training School for generalized basic course as a basis for forging esprit de corps, before a specialized course that is specific to each organization, as a precondition for enhanced internal security. The recommendation is receiving attention
- f. As for inter service security relationship, the office have been able to maintain a solid rapport with the Police, State Security Services (SSS) especially in the area of investigation in which the Commission has limited constitutional powers and responses have been instant.

## CORPS OFFICES



K Agomoh (CC)

### CORPS PROVOST OFFICE

Contextually, the Corps Provost Office is one of the key Corps Offices directly answerable to the Corps Marshal and Chief Executive (COMACE)

The Provost office serves as the watch-dog of the Commission. In this view, it carries out the following functions.

- a. Ensuring the security of FRSC property and its personnel in all formations.
- b. Maintenance of discipline in accordance with the regulations on maintenance of discipline.
- c. Investigation and prosecution of cases of alleged misconduct as may be directed by COMACE.
- d. Prevention and detection of crimes.
- e. Enforcement of law and order amongst members of corps in line with FRSC regulations and condition of service.
- f. Conducting cordon and search on persons suspected of having committed an offence within FRSC premises.

### ACHIEVEMENTS

Within the year under review, the office has been able to record achievements in these areas:

- a. Maintained security of lives and property.
- b. Investigated cases objectively without bias.
- c. Maintained law and order through enforcement of discipline.
- d. Secured conviction of defaulters through prosecutions.
- e. Reduction in crime through detention and prevention.



## CORPS OFFICES



Ford Oti (CC)

### CORPS AUDIT OFFICE

The fiscal year 2008 was a period of rapid growth and continued productivity for Corps Audit. Corps Audit under the Corps Marshal and Chief Executive's direction actively supports and strengthens the entire FRSC by ensuring that resources are used for the purpose for which they were provided. By striving to facilitate positive change, Audit adds value and improves FRSC operations and programmes. Internal Audit is a managerial control system in an organization. Specifically, the Corps internal Audit performs the following functions during the year under review.

- a. Recommending changes in the system of operation and in setting up of new system.
- b. Corps Audit has been able to design and install changes and improvements to the existing system and set up a new system.
- c. Preparation of routine reports on FRSC activities both on a comprehensive and exceptional basis.
- d. The Audit monitors the performance of the FRSC system by examining estimates and by use of testing controls effects corrections on invoiced over-contracts, procedures, human resource matters and cash/stock management.

### ACHIEVEMENTS

The following are the major achievements of the corps office:

- a. Creating awareness on the existence and provision of various laws, rules and regulation for running FRSC business.
- b. Ensuring that the reports of FRSC accounts from 1999 to 2006 were signed and submitted to the Auditor General of the Federation.
- c. Signing and submission of 2007 Audit report in 2008 at record time since 1998.
- d. Streamlining various request for banks loans and other loan advances



## CORPS OFFICES



GO Olaniran, Esq (CC)

### CORPS PUBLIC EDUCATION OFFICE

In view of the need for effective traffic management and prevention of road traffic crashes on Nigeria roads the Public Education Office was established as a Corps Office to ensure effective public education and sensitization of drivers, motorists and other road users on the proper use of highways

#### DUTIES/FUNCTIONS

The basic function of the office is to create awareness on safer road use among road users, facilitate internal dissemination of information among staff, and manage the corporate image of the Commission and serve as a feedback medium between FRSC and the public. The CPEO functions are performed through the following strategies.

- a. **Public Education:** The office acts as the public teacher, teaching the essence of road use to all road users, through TV and Radio programmes, jingles, motor park campaigns/rallies, use of posters.
- b. **Information Management:** - The Corps Public Education Office creates a two way communication channel between the management and Internal or External Public by communicating the Commission's policies, programmes and activities to the public while obtaining feedback to the management.
- c. **Public Relations;** - The office serves as a bridge between the Commission and the public such as the stakeholders (Transport Unions, Government and Corporate Agencies) etc so as to achieve a synergy in safety management, by performing all public relations functions to help build a healthy environment for effective service delivery and sustainable growth.
- d. **Press Relations:** - The office equally performs Press relations to ensure that mutual and cordial relationship exists between the Commission and the various media organizations. This is done through press invitation, placements of press statements, TV and Radio jingles, organizing press luncheon, media facility tour, this is to ensure that FRSC programmes and activities receives adequate publicity.

#### ACHIEVEMENTS

- a. **Public Education Activities:** - The period under review witnessed a high level of public education activities both at the headquarters and field Commands. These activities were prosecuted, through motor park rallies, daily offenders' lectures, safety advocacy visits to stakeholders, TV and radio programmes on road safety matters.
- b. **Media Coverage/Publicity:** - The year 2008 received unprecedented coverage and media publicity of the Commission's programmes and activities from both print and electronic media.
- c. The Corps Public Education Office in collaboration with NIPOST designed and produced the 20th Anniversary commemoration stamp bearing safety message on overloading to sensitize the public and bring road safety advocacy beyond national boundaries.
- d. The office successfully collaborated with the Nigerian Breweries Plc to carry out Don't Drink and Drive Campaign in the six (6) Geo-political zones.
- e. COMACE'S special media appearances were executed successfully.



## CORPS OFFICES



Dr. S Mohammed (CC)

### CORPS MEDICAL AND RESCUE SERVICES OFFICE

The Corps Medical and Rescue Services Office was established from the merger of the former Corps Rescue and the Clinic Unit of former Admin and Supply Department and charged with the following responsibilities.

- a. Supervision and co-ordination of activities of the Medical centers at the Headquarters, Zonal Clinics, Road Traffic Clinics and Help Areas as regards care of Road Traffic Crash victims or injuries on the highways.
- b. Collate information on Road Traffic Crashes, Number of Hospitals, and Health Centre's nationwide.
- c. Co-ordinates emergency services and rescue programmes with relevant organizations and stakeholders.

### ACHIEVEMENTS

- a. Successfully organized/participated in simulation exercise for Road Traffic Crashes in collaboration with NEMA, Civil Defense and the Nigeria Police.
- b. Through concerted efforts and scrutiny of previous international reports, the Corps Office identified as inappropriate the report of the data of the Sub-Saharan Countries and indeed most African Countries, leading to the wrong perception which ranked Nigeria as one of the highest among the leading countries in terms of RTC Record.
- c. FRSC with other stakeholders in disaster Management developed the documents "Search and Rescue Evaluation Plan for Nigeria" which spells out the functions and duties of different Agency during search and rescue operations.

## CORPS OFFICES



UB Ajingi (CC)

### CORPS PROTOCOL OFFICE

Corps Protocol Office is the image maker of the Commission. Protocol plays a great role in receiving dignitaries and entertaining people in a work situation as it involves co-workers and visitors. Protocol duties therefore can be seen as the planning and execution of all social activities in an organization or as well as the reception of guest arrangement and attendance of ceremonies within the organization or as invited by other organizations.

#### FUNCTIONS OF PROTOCOL OFFICE

- Organizing and preparing venues for all official functions and ceremonies.
- Prepare protocol list of VIP's and label seats for guest in order of precedence especially, during occasions.
- Determine protocol procedures during functions.
- Arrange logistics for courtesy calls, tours and travels.
- Prepare itinerary for courtesy calls and travels.
- Arrange passages for foreign tours through Embassies, Consular offices and Foreign Affairs Department for Commission's Staff.
- Process passport, Visa and other Airport protocol services, and arrange entitlement for official trips.

#### ACHIEVEMENTS

- The Protocol Office has eased and at most times eliminated the bottlenecks or problems that would have arisen during a function and programme designed for the Corps Marshal.
- Processed travel documents for Officers of the Commission.
- Coordinate courtesy calls for the Corps Marshal and Chief Executive for different Ministries and parastatals.
- Secured both local and foreign travel tickets for the Corps Marshal and his entourage at different times.



## CORPS OFFICES



DG Terrang (CC)

### CORPS SECRETARY'S OFFICE

In conjunction with the relevant Departments, the Corps Secretary's Office deploys Officers for effective manpower utilization. The Corps secretary's Office gathers, collates, and analyzes statistics on the Commission's Manpower requirements; make projections for manpower plans using indicators like educational qualification, area of specialization and work experiences of staff as a guide.

### ACHIEVEMENTS

- a. Organization of Seminar on Personnel Administration and Management for Commanding Officers and Men of the Commission.
- b. Provides administrative, technical and secretarial service for FRSC staff optimization project.
- c. Conducted feasibility study for computerization of FRSC Officers Records.
- d. Maintenance of Officers seniority list.

## CORPS OFFICES



DG Terrang (CC)

### CORPS SECRETARY'S OFFICE

In conjunction with the relevant Departments, the Corps Secretary's Office deploys Officers for effective manpower utilization. The Corps secretary's Office gathers, collates, and analyzes statistics on the Commission's Manpower requirements; make projections for manpower plans using indicators like educational qualification, area of specialization and work experiences of staff as a guide.

### ACHIEVEMENTS

- a. Organization of Seminar on Personnel Administration and Management for Commanding Officers and Men of the Commission.
- b. Provides administrative, technical and secretarial service for FRSC staff optimization project.
- c. Conducted feasibility study for computerization of FRSC Officers Records.
- d. Maintenance of Officers seniority list.



## CORPS OFFICES



JA Akolo (CC)

### CORPS PROCUREMENT OFFICE

The Procurement Office was created in July, 2008 as a result of Federal Government directives and the enactment of the public Procurement Act, 2007. The present Corps Procurement Office was excised from the former Admin and Supply, Tenders Board Section.

#### FUNCTIONS OF PROCUREMENT OFFICE

- a. The Corps Procurement Office is responsible for the collection and compilation of various needs of the Corps for management's considerations.
- b. It undertakes timely and periodic market survey of the various needs of the Corps in order to advise management, accordingly.
- c. Advertises for tenders from contractors on the basic needs of the Corps in order to award them.
- d. Ensures that contracts are given out in compliance with the public Procurement Act, 2007.
- e. Accepts any procured or supplied store items into the store.
- f. Ensures that the store items supplied, awarded, or purchased directly meet the basic specifications of the Corps.
- g. Updates inventory of items in offices and official residences.
- h. Keeps update of record of goods or issued out to various Commands.

#### ACHIEVEMENTS OF PROCUREMENT OFFICE

- a. Computerization of the store which is about to take off soon, as necessary steps have been taken for the execution of the project.
- b. Transparency in the award of contracts as the due process principle is complied.
- c. Successful implementation of the 2008 Capital Budget of the Corps.
- d. The acceptance of the procurement/awarded item by vendors based on value for money concept.
- e. Kitting of recently trained Officers and Marshals with complete set of uniform, including Ceremonial Uniform for the Officers for the first time.

## ZONES AND SECTOR COMMANDS

The Corps comprises of twelve (12) Zonal Commands, 37 Sectors and 155 Units which engage in patrol activities and carrying out rescue operations among other duties during the year under review.

Each zone comprising a number of State Sector Commands manned by a Sector Commander whose functions include the supervision, control and coordination of rescue activities within their area of jurisdiction. The Sector Commands have component Unit Commands spread across for easy operational coverage. Details of the Zonal Commands, the respective Zonal Commanding Officers and State Sector Commanders are as follows:

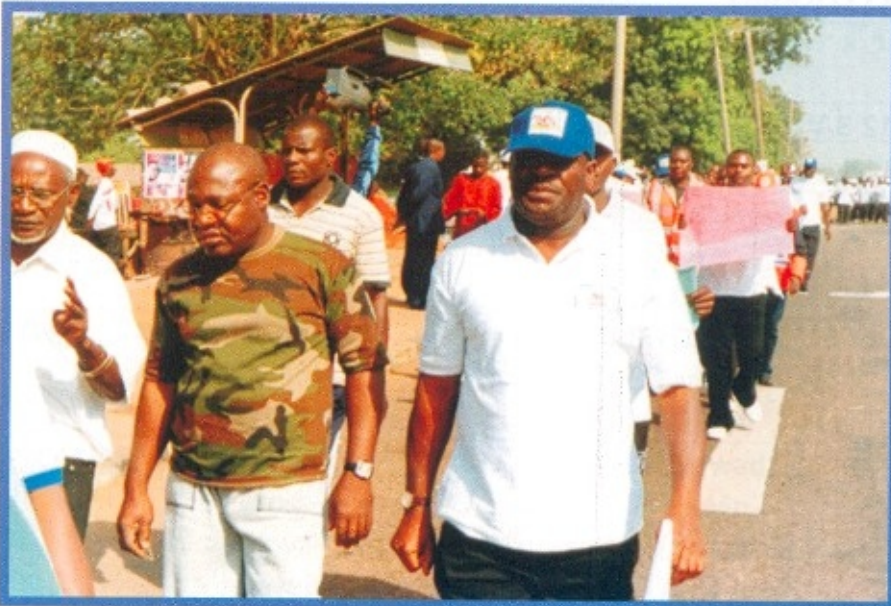
### ZONES AND SECTOR COMMANDS

ZONES AND COMMANDING OFFICERS IN CHARGE	COMMANDS	SECTOR COMMANDERS
<b><u>ZONE RS 1 KADUNA</u></b> EGNR. BG Babagana, fwc	Kaduna Kano Katsina Jigawa	AE Zamber Y Garba AA Hammed GV Ngueku
<b><u>ZONES RS 2 LAGOS</u></b> Chike Nwaka	Lagos	KY Olagunju
	Ogun	OM Olagunju
<b><u>ZONES RS3 YOLA</u></b> AA Dutse	Adamawa Gombe Taraba	CO Oladele FC Osakwe M Wakawa
<b><u>ZONE RS4 JOS</u></b> ENGR. BA Kwaga	Plateau Benue Nasarawa	SO Odukoya SO Oke SA Ajenge
<b><u>ZONE RS5 BENIN</u></b> NA ZAKARI	Edo Delta Anambra	BB Darwang O Familoni MI Garba
<b><u>ZONE RS 6 P/COURT</u></b> AA Abu	Rivers Cross- River Akwa- Ibom Bayelsa	IM Nawada IG Eseyin PO Osadebmewen EJ Abiodun
<b><u>ZONE RS 7 FCT</u></b> PH Dick	Abuja Niger	NC Akpabio UM Bello





The Deputy Governor of Kaduna Mr. Patrick Ibrahim Hyakuwa in Handshake, with Cdr. J Asom, during the Ember Months Campaign at Kaduna Township Stadium.



"2008" World Remembrance Day of Road Traffic Crash Victims, Road walk in Kaduna.





The Deputy Governor of Kaduna State Mr. Patrick Ibrahim Hyakuwa, declaring opened the 2008 Ember Months campaign at the Kaduna Township Stadium.



Courtesy visit to His Excellency, the Executive Governor of Kaduna State Arc. Namadi Sambo at State House Sir Kashim Ibrahim House, Kaduna by the Sector Commander E Zamber.





The Sector Commander, RS2.1 Lagos at RS 2.113 Lekki Unit Command during Public Enlightenment Campaign.



The Unit Commander, Lekki Unit Command delivering Lecture at public Enlightenment Campaign.





The Unit Commander, Lekki Unit Command (RS2.113) answering questions after delivering Lecture during one of its Public Enlightenment Campaign.



Group picture with the Catholic Bishop of William's Cathedral Church Lafia, during the World Remembrance Day of Road Traffic Crash Victims.



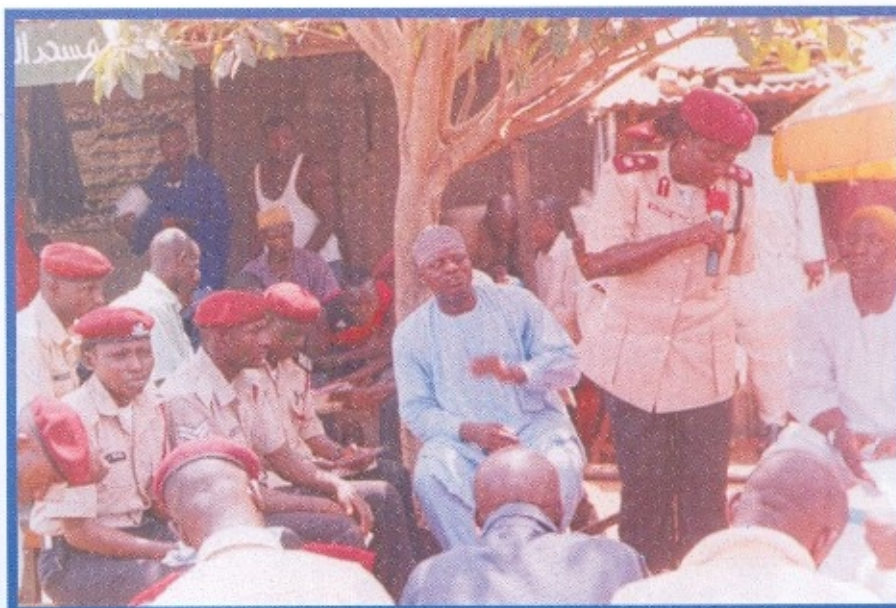


The Commissioner of Police, Nasarawa State presenting a Safety Helmet to the State Chairman of Motorcycle Riders Union of Nigeria at Central Park Lafia during the Ember Month campaign in 2008.

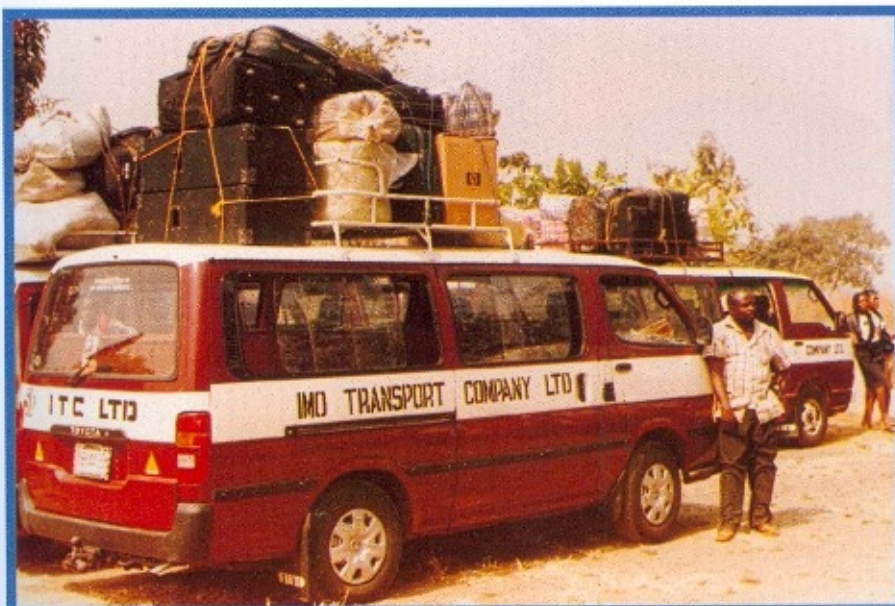


Hospital visitation and Gift presentation to Road Traffic Victims during the World Remembrance Day by ROSOWA at General Hospital, Lafia Nasarawa State.





The Sector Commander SA Ajenge addressing members of the NURTW during Public Enlightenment Programme held at Pick Up Garage Shandam road Park. Lafia.



Overloaded bus arrested by Gwagwalada Unit Command.





The effect of overloaded vehicle resulting in road traffic crash along Abaji-Lokoja road



Overloaded vehicle arrested and impounded along Abaji Road.





A commercial bus that fell into a river along Abaji- Gwagwalada Road.

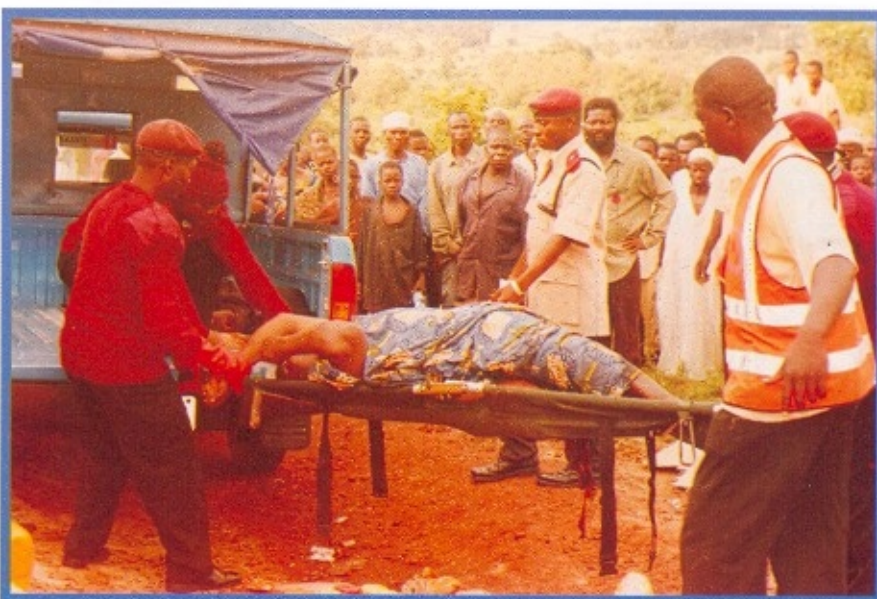


Overloaded Lorry Crashed into a shop along Abaji-- Gwagwalada Road.





Truncated Life along GwagwaladaAbaji Road.



Staff of RS7.11 Gwagwalada carrying accident victim to the Hospital.





Accident involving 911 Lorry and a Honda civic car along GwagwaladaKwali Road.



FRSC Officers carrying an accident vehicle with the tow truck.





An evidence of projected load on overloaded vehicle.



A ghastly road crash resulting in the loss of lives and damage to economic properties.





A crashed luxurious bus along the highway.



An Overloaded vehicle impounded at FRSC premises.





This bus crashed into the bush as a result of over speeding.



The MD Julius Berger Construction Company thumb printing as part of the requirements for CNDL





The Inspector general of Police Mike Okiro thumb prints to in fulfilment of the requirement for the acquisition of Driver's License.



A Passenger bus crashes into a truck carrying iron rods on Abaji-Gwagwalad road killing all passengers on board.



## NOTABLE ACHIEVEMENTS OF THE COMMISSION IN 2008

### ACHIEVEMENTS

- a. Through regular special patrols, night patrols, mobile courts, joint patrols, public enlightenment programmes as well as radio programmes, there is high level on compliance of motorists on overloading, good lighting system, buying of new tyres instead of used tyres and seatbelt.
- b. The Osun state government and the motorists praised FRSC, Osun Sector Command for its efforts in reducing traffic congestion in the state.

### SUMMARY OF OFFENDERS AND OFFENCES DATA IN 2008

MONTH	OFFENDERS	OFFENCES
JANUARY	596	602
FEBRUARY	907	954
MARCH	1166	1226
APRIL	1151	1185
MAY	1047	1090
JUNE	897	924
JULY	1031	1055
AUGUST	1206	1236
SEPTEMBER	958	979
OCTOBER	913	935
NOVEMBER	819	839
DECEMBER	1158	1199
TOTAL	11,849	12,224





The Governor of Osun State His Excellency, Prince Olagunsoye Oyinola with the Sector Commander during 2008 Ember Month flag-off campaign in the state.

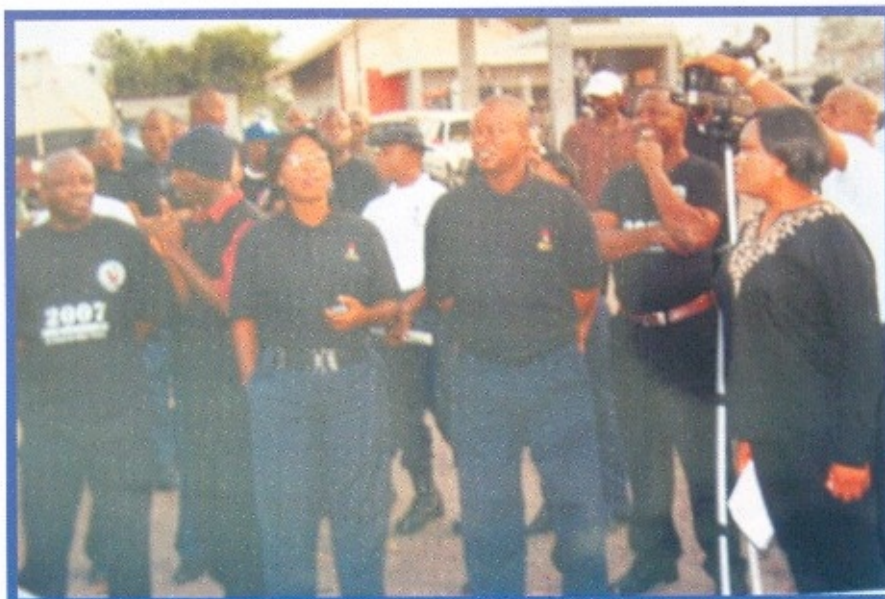


The Sector Commander RS11.1 Osogbo visits the Commissioner of Police Osun state as a follow up with regards to Crash helmet implementation and enforcement in the State.





The Executive Governor cutting the tape to declare the year 2008 Ember Month Flag-off campaign, while the Sector Commander watches.

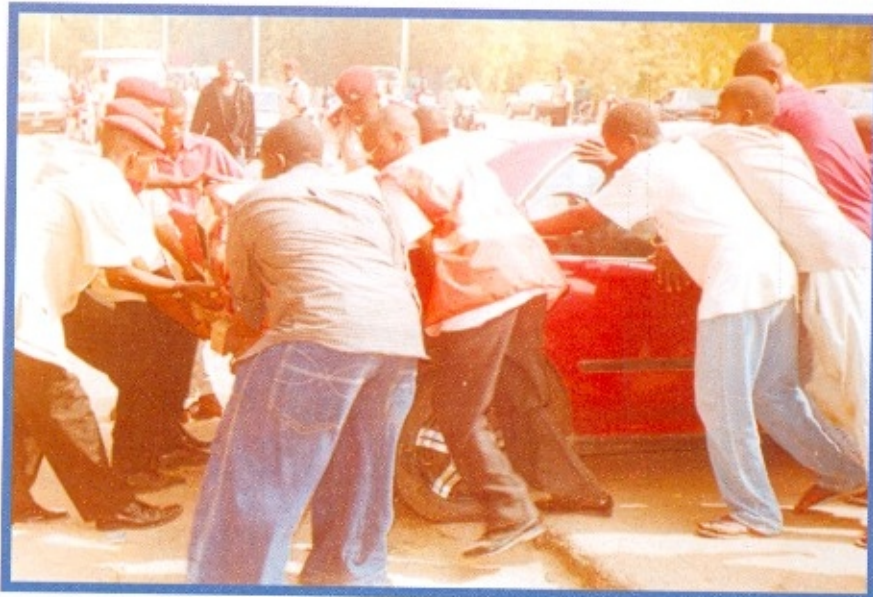


The Sector Commander AO Daniel, the Zonal Head of Operations HZ Foumsuk and two Officers from the Nigeria Civil Defense Corps (NCDC) during procession walk in remembrance of 2008 Road Traffic Crashes Victims.





Staff of RS 12.2 Borno Sector Command, Clearing accident wreckage on the highway.



Staff of RS12.2 Borno and members of the public clearing Obstruction after a Fatal Accident that occurred in December, 2008.





RS12.2 Borno Sector Command with the Management Team of 21 Armoured Brigade during the courtesy call of the Commandant to FRSC Office, Maiduguri.



The Sector Commander RS 12.2 Borno, with Brigadier General Kash Yahaya. The Brigade Commander of 21 Armored Brigade Maiduguri, during His courtesy call to FRSC Command Maiduguri.



## FEDERAL ROAD SAFETY COMMISSION AT 20

### EXECUTIVE SUMMARY

The Federal Road Safety Commission of Nigeria (FRSC) organized an international conference on Road Safety in Africa as part of a series of activities to celebrate two decades of meritorious service to humanity. The conference was held at the Abuja Sheraton Hotel and Towers from 18th to 19th February 2008 with the theme "Road Safety Management in Africa: Vision 2020". The conference provided the Commission with the opportunity to take stock of the past activities and to chart a course of the future.

The Objectives of the Conference were:

1. To highlight the social and economic implication of road traffic crashes, in order to appreciate and drastically reduce road traffic injuries, as such raise awareness and resources for road improvement in Africa.
2. To review the current road safety management practice in development countries, Africa and Nigeria in particular. The conference will review progress made so far by African countries in improving road safety; with concurrent knowledge sharing from best practices of other participating developed countries.
3. To appraise for implementation the recommendations of the World Report on road traffic injury prevention and the African Road Safety initiative.
4. To advance the development of national action plans for road safety activities in African countries and identify ways to mobilize resources for rapid improvement in road safety.

After two days of intense deliberations, the conference identified certain problems militating against the achievement of desired safety standard on our roads: These include

- a. Engineering such as traffic, road markings, traffic signals, lane markings etc.
- b. Infrastructure such as poor road maintenance
- c. Health such as accident trauma, drugged and drunk driving, and lack of paramedic intervention.
- d. Inadequate government and alternative funding
- e. Capacity building including lack of professionalism and inadequate training.
- f. Poor and inadequate utilization of stakeholders
- g. Lack of integrated transport system.
- h. The vulnerability of road users and poor attitude towards obedience to road traffic rules and regulations. Inadequate investment in transport infrastructure.



The conference agreed on the following action plan for implementation by African governments.

1. Road Safety is a shared responsibility requiring inter-agency, government and international collaboration.
2. Government and related agencies should create a reliable Database and employ technology to promote effective road safety management.
3. African countries should adopt the lead agency model as employed in Nigeria to manage road safety.
4. Governments should provide a regulatory framework for road transportation.
5. Government should involve safety expert in the design and construction of the transport infrastructure.
6. African governments should invest in education and integrate road safety into the curriculum of their educational institutions. They should also strengthen their public enlightenment campaigns on road safety practices to foster safety conscious attitudes in road users.
7. Governments should seek to establish road safety colleges to enhance the capacity and competence of road officials and to ensure national standards.
8. African governments should allocate adequate funds in their national budgets to the development of road safety infrastructure.
9. Governments should adopt appropriate road safety strategies and promote exchange of good practice.
10. Road Safety should be integrated into the development strategies of African nations.
11. African governments should integrate road design concepts into their road transport infrastructure projects.
12. The volunteer culture in traffic safety management should be promoted across Africa.
13. Governments should muster the necessary political will to enforce road safety legislation that meets international best practice.
14. African governments should promote the development of integrated and co-ordinated multi-modal transport system.
15. Governments should establish paramedic training institutions and train-the-trainer programmes to enhance the capacity of road safety officers to assist road accident victims.
16. Some of the practices in the airline industry such as the maintenance of passenger manifest, payment of insurance benefits/compensation to accident victims should be incorporated into the road transport industry in Africa.
17. Governments should develop the necessary framework for more effective enforcement of traffic rules and regulations. This should include legislation establishing permissible levels of blood alcohol concentration (BAC)
18. The capacity of the FRSC to provide first aid accident victims should be enhanced.
19. The FRSC and similar agencies should play advisory roles to governments in the development of transport infrastructures.
20. The action plan should be made available to all governments and inter-governmental organizations in Africa



## NOTABLE ACHIEVEMENTS OF FRSC, FOR THE YEAR 2008

- A. Federal Road Safety Commission organized an international conference on road Safety in Africa as part of a series of activities to celebrate two decades of meritorious service to humanity.
- b. Establishment of Database for Fleet Operators in Nigeria. The robust database is required for smooth administration of the Road traffic Standardization Scheme (RTSSS) and fleet regulation in Nigeria.
- c. Continue reduction in the number and severity of road crashes in Nigeria with improved highway patrol, response to emergency and greater safety awareness, the Country has continued to record marginal decline in the number and severity of road crashes.
- d. World Remembrance Day of Road Traffic Crash Victims. FRSC organized the activities to remember those who lost their lives or sustained injuries from road traffic crashes while at the same time looking for ways to forestall future occurrence.
- e. Joint Research on Road Infrastructure was conducted with Unilag consult on the study of road furniture on Nigerian roads. The research was on the level of understanding of road signs and markings by Nigerians.
- f. Establishment of Centre for close communication link between FRSC and the public and also to attained emergencies within the shortest possible time.
- g. FRSC with other stakeholders in Management developed the documents "Search and rescue and Evaluation plan for Nigeria" which spells out the function and duties of different Agencies during the search and rescue operations.
- h. Launching of the new 182 and 140 patrol vehicles and bikes to boost patrol activities on Nigerian roads.
- i. Conducted traffic count at selected International Border post. This was carried out in twenty (20nos) selected border post across the Country. Reports have been completed and sent to FERMA.
- j. Driving School Standardization Scheme Programme (DSSSP). The Driving School Standardization Scheme Programme (DSSSP) came about because of the observed uncoordinated activities of driving schools in Nigeria manifesting in inadequate facilities, sub-standard course contents and outright misinterpretation of concepts borne out of inadequate education in the field of driver's education as well as general lack of supervision.



## SOME SELECTED ROAD CONDITION IN NIGERIA

STATE	ROAD SEGMENT	STARTING POINT	pot holes	Ditches	Gorges	Road signs
ADAMAWA	1KM	POLICE ROUND ABOUT	available	Available	available	not available
ADAMAWA	2KM	E.Y.N not available.1 JUNCTION	not available	not available	not available	not available
ADAMAWA	1KM	MAIHA JUNCTION	not available	not available	not available	available
ADAMAWA	2KM	DEKIT CONSTRUCTION CO.	not available	not available	not available	not available
ADAMAWA	4KM	POLICE CHECK POINT	not available	available	not available	not available
ADAMAWA	20KM	LUMORE PAKKA	not available	available	not available	not available
ADAMAWA	21KM	DAY SCHOOL PAKKA	available	available	not available	not available
ADAMAWA	22KM	TRANSFORMER PAKKA	available	available	available	not available
ADAMAWA	23KM	ZUMAHA CLINIC	available	not available	not available	not available
ADAMAWA	24KM	DALEHI BORE-HORE	available	not available	not available	not available
ADAMAWA	3KM	YELWA JUNCTION	not available	not available	not available	not available
ADAMAWA	4KM	MOTOR PARK JUNCTION	not available	not available	not available	not available
ADAMAWA	5KM	TOLL GATE MUBI	available	available	not available	not available
ADAMAWA	6KM	EYN NO.4 CHURCH	available	available	not available	not available
ADAMAWA	7KM	NJERRI	available	available	available	not available
ADAMAWA	8KM	JAN KASA	available	available	available	not available
ADAMAWA	9KM	TASHAN FULANI	available	available	available	not available
ADAMAWA	10KM	GANDUN DAJI	available	available	available	not available
ADAMAWA	11KM	GANDUN DAJI	available	available	available	not available
ADAMAWA	12KM	POLICE CHECK POINT, GANDU	available	available	available	not available
ADAMAWA	13KM	MAYO LOPE JUNCTION	available	not available	not available	not available
ADAMAWA	14KM	EYN NO.1 MARABA	available	available	not available	not available
ADAMAWA	15KM	MOTOR PARK MARABA	not available	not available	not available	not available
ADAMAWA	NUM- ROUND ABOUT	PRISON COMPLEX	available	not available	not available	not available
ADAMAWA	KM 2	RS 3.14 BASE ENTRANCE	available	available	not available	not available
ADAMAWA	KM 2	YOLA CITY GATE	available	not available	not available	not available
ADAMAWA	KM 4	YOLA CITY GATE	available	available	not available	not available
ADAMAWA	KM 2	KWANAWWAYA JUNCTION	available	not available	not available	available
ADAMAWA	KM 3	NNPC DEPOT	not available	not available	not available	not available
ADAMAWA	KM 2	2KM AFTER NNPC DEPOT	not available	not available	not available	not available
GOMBE	170-127 KALTUNUGO-CHAM	170 YLA (KALTUNGO)	available	not available	not available	available
GOMBE	44-19 BILLIRI-FILIYA	44 BILLIRI	available	not available	not available	not available
GOMBE	50-01 KALTUNGU-SHM	50 KALTUNGO	available	available	not available	not available
GOMBE	70-35KM	70KM GME (KALTUNGO)	available	not available	not available	available



## SOME SELECTED ROAD CONDITION IN NIGERIA

STATE	ROAD SEGMENT	STARTING POINT	Pot holes	Ditches	Gorges	Road signs
BAYELSA	37-38KM	FRSC OFFICE	available	available	available	available
BAYELSA	5-6KM	FRSC OFFICE	not available	not available	not available	available
BAYELSA	1-5KM	FRSC OFFICE	not available	not available	not available	available
BAYELSA	3-3KM	FRSC OFFICE	not available	not available	not available	available
BAYELSA	1-3KM	FRSC OFFICE	not available	not available	not available	available
BAYELSA	36-37KM	FRSC OFFICE	available	available	available	available
BAYELSA	35KM	FRSC OFFICE	available	available	available	available
BAYELSA	33-34KM	FRSC OFFICE	available	available	available	available
BAYELSA	30KM	FRSC OFFICE	available	available	available	not available
BAYELSA	24-25KM	FRSC OFFICE	available	available	available	available
BAYELSA	21-23KM	FRSC OFFICE	available	available	available	available
BAYELSA	1-5KM	FRSC OFFICE	available	available	available	available
BAYELSA	42-47KM	FRSC OFFICE	available	available	not available	not available
BAYELSA	30-37KM	FRSC OFFICE	available	available	available	available
BAYELSA	20KM	FRSC OFFICE	available	available	available	not available
BAYELSA	18KM	FRSC OFFICE	available	available	available	not available
BAYELSA	15KM	FRSC OFFICE	available	available	available	available
BAYELSA	21KM	FRSC OFFICE	available	available	available	not available
BAYELSA	15KM	FRSC OFFICE	available	available	available	available
BAYELSA	14KM	FRSC OFFICE	available	available	available	available
BAYELSA	9KM	FRSC OFFICE	available	available	available	available
BAYELSA	1-5KM	FRSC OFFICE	available	available	available	available
BAYELSA	9KM	FRSC OFFICE	available	available	available	available
BAYELSA	13KM	FRSC OFFICE	available	available	available	available
BAYELSA	21KM	FRSC OFFICE	available	available	available	not available
BAYELSA	1-5KM	FRSC OFFICE	available	available	available	available
BAYELSA	21KM	FRSC OFFICE	available	available	available	not available
BAYELSA	15KM	FRSC OFFICE	available	available	available	available
BAYELSA	18KM	FRSC OFFICE	available	available	available	not available
BAYELSA	19KM	FRSC OFFICE	available	available	available	not available
BAYELSA	20KM	FRSC OFFICE	available	available	available	not available
BAYELSA	29KM	FRSC OFFICE	available	available	available	not available
BAYELSA	30-37KM	FRSC OFFICE	available	available	available	available
BAYELSA	42-47KM	FRSC OFFICE	available	available	not available	not available
BAYELSA	21-23KM	FRSC OFFICE	available	available	available	available
BAYELSA	24-25KM	FRSC OFFICE	available	available	available	available
BAYELSA	40-42KM	FRSC OFFICE	available	available	available	available
BAYELSA	33-34KM	FRSC OFFICE	available	available	available	available
BAYELSA	30KM	FRSC OFFICE	available	available	available	not available



## SOME SELECTED ROAD CONDITION IN NIGERIA

STATE	ROAD SEGMENT	STARTING POINT	pot holes	Ditches	Gorges	Road signs
BAYELSA	3-4KM	FRSC OFFICE	not available	not available	not available	available
BAYELSA	1-5KM	FRSC OFFICE	not available	not available	not available	available
BAYELSA	5-6KM	FRSC OFFICE	not available	not available	not available	available
BAYELSA	37-38KM	FRSC OFFICE	available	available	available	available
BAYELSA	37-38KM	FRSC OFFICE	available	available	available	available
AKWA IBOM	ATAOBONG TO UQUA	ATABONG JUNCTION	available	not available	not available	not available
AKWA IBOM	OKON TO IKOT NYA	OKON BRIDGE HEAD	available	not available	not available	not available
AKWA IBOM	ASL	UKANAFON COUNCIL	available	available	available	not available
AKWA IBOM	OGONI ROAD	UKANAFUN COUNCIL HALL	available	available	available	not available
AKWA IBOM	ETTE JUNCTION	EKPAT AKWA JUNCTION	available	available	available	not available
AKWA IBOM	OGNI ROAD	UKANAFUN JUNCTION	available	available	available	available
AKWA IBOM	OGNI ROAD	UKANAFON COUNCIL	available	available	available	not available
AKWA IBOM	UKANAFUN	UKANAFUN JUNCTION	available	available	available	not available

STATE	ROAD SEGMENT	STARTING POINT	pot holes	ditches	gorges	road signs
FCT	ABAJI-MURTALA BRIDGE	ABAJI	available	available	available	available
FCT	ABAJI ROUND ABOUT	ABAJI ROUND ABOUT	available	not available	not available	available
FCT	ABAJI	ABAJI	available	available	available	available
FCT	JULIUS BERGER	JULIUS BERGER R/ABOUT	available	available	not available	available
FCT	BOLINGO JUNCTION	JULIUS BERGER R/ABOUT	available	not available	not available	not available
FCT	BOLINGO JUNCTION	BOLINGO JUNCTION	not available	not available	not available	not available
FCT	NNPC-CBN	NATIONAL MOSQUE	available	not available	not available	available



## SOME SELECTED ROAD CONDITION IN NIGERIA

STATE	ROAD SEGMENT	STARTING POINT	pot holes	ditches	gorges	road signs
EBONYI	1.3KM	AFK-AJ,FORK JUNCTION	available	available	not available	not available
EBONYI	1.8KM	1.3KM - 1.8KM	available	available	not available	not available
EBONYI	2.9KM	1.8KM - 2.9KM	available	available	not available	not available
EBONYI	4.3KM	2.9KM - 4.3KM	available	available	not available	not available
EBONYI	5.3KM	4.3KM - 5.3KM	available	available	not available	not available
EBONYI	7.2KM	5.3KM - 7.2KM	available	available	not available	not available
EBONYI	9.5KM	7.3KM - 9.5KM	available	available	not available	not available
EBONYI	10KM	9.5KM - 10KM	available	available	not available	not available
EBONYI	13.5KM	11KM - 13.5KM	not available	available	not available	not available
EBONYI	13.9KM	13.5KM - 13.9KM	available	available	not available	not available
EBONYI	1.3KM	AFK -OKG JUNC.(1.3KM)	not available	not available	not available	available
EBONYI	2.3KM	1.3KM -2.3KM	not available	not available	not available	available
EBONYI	3.9KM	2.3KM - 3.9KM	not available	not available	not available	available
EBONYI	7.00KM	3.9KM - 7.00KM	not available	not available	not available	available
EBONYI	10.00KM	7.00KM - 10.00KM	not available	not available	not available	available
EBONYI	12.5KM	10.00KM - 12.5KM	not available	not available	not available	available
EBONYI	KM 1	AMURO R/ABOUT-UNWNO	available	available	not available	not available
EBONYI	3KM	1KM - 3KM	available	available	not available	not available
EBONYI	4.5KM	3KM - 4.5KM	available	available	not available	not available
EBONYI	6.9KM	4.5KM - 6.9KM	available	available	not available	not available
EBONYI	9.3KM	6.9KM - 9.3KM	available	available	not available	not available
EBONYI	10.3KM	9.3KM - 10.3KM	available	available	not available	not available
EBONYI	11.8KM	10.3KM - 11.8KM	available	available	not available	not available
EBONYI	8KM - 9.5KM	SPERA IN DEO JUNCTION	available	available	not available	available
EBONYI	KM 0.5 - KM 1.0	TIMBAK SHED(0.5KM)	available	available	not available	not available
EBONYI	KM 1 - KM 6	SAFE CONS. COMP.(KM1)	available	available	not available	available
EBONYI	KM6 - KM9	CMB SEC. SCH. (KM6)	available	available	available	available
EBONYI	KM 7 - KM 12	GVSS AMAGU-ONUETSUEKA	available	available	not available	available
EBONYI	KM 12 - KM16	ONUZOR NWANDU JUNC.	available	available	not available	available
EBONYI	KM17 - 21KM	AMUZU VIL (KM 17)	available	available	not available	available
EBONYI	KM 21 - KM 26	ONUKE (KM2)	available	not available	not available	available
EBONYI	KM 26 - KM 32	COM. PRI. SCH. EDEMBIA	available	not available	not available	available
EBONYI	KM 32 - KM 38	AMUDO VIL. (KM 32)	available	not available	not available	available
EBONYI	KM 38 - 41KM	COM. SEC. SCH. ABAOME-	available	not available	not available	not available
EBONYI	KM41 -KM44	KM41	available	available	not available	NO
EBONYI	KM44 - KM48	KM44	available	available	not available	not available
EBONYI	KM 48 - KM 51	NUNCO PE T. KM48	available	available	not available	not available
EBONYI	KM51- KM53	KM51 MILE STONE	available	available	not available	not available
EBONYI	KM53 -KM58	KM53 MILESTONE(AKPOJO)	available	available	available	available
EBONYI	KM 55 - KM 58	IBI JUNCTION RM 55	available	available	not available	available
EBONYI	KM 1 - KM 9	SPERA IN DEO	available	available	not available	available
EBONYI	KM 9 - KM 18	NTA, ABAKALIKI	available	not available	not available	available
EBONYI	KM 18 - KM 24	KM 18 (EZZAMGBO AREA)	available	available	not available	available
EBONYI	KM 24 - KM 29	KM 24 (EZZAMGBO)	available	available	not available	available
EBONYI	KM 29 - 33	OHAOZORA JUNC. NTEZI	available	available	not available	not available
EBONYI	KM 33 - KM 47	ISHIKPUMA JUNCTION	available	available	available	available
EBONYI	KM 47 - KM 52	FERMA STATION, NKALAGU	available	available	not available	available
EBONYI	KM 1 - KM 7	SPERA IN DEO JUNCTION	available	available	not available	available
EBONYI	KM 7 - KM 19.5	SHARON JUNCTION	not available	not available	not available	available



## SOME SELECTED ROAD CONDITION IN NIGERIA

STATE	ROAD SEGMENT	STARTING POINT	pot holes	Ditches	Gorges	road signs
EBONYI	KM22 - KM 30	NWEZEYIN JUNCTION	available	available	not available	available
EBONYI	KM30 - KM32	ECHIENDU PRI. SCH.	available	available	not available	available
EBONYI	KM 32 - KM 32	NDIAKPARATA	available	available	available	not available
EBONYI	KM 37 - KM 42	NGUJI - OBODO	available	available	available	not available
EBONYI	KM 0 - KM 4	PRESCO JUNCTION	not available	not available	not available	available
EBONYI	KM 0 - KM 7	GOVT. HOUSE R/ABOUT	available	not available	not available	available
EBONYI	13.5KM	11KM - 13.5KM	not available	available	not available	not available
EBONYI	13.9KM	13.5 KM - 13.9 KM	available	available	not available	not available
EBONYI	9.5KM	7.2 KM - 9.5 KM	available	available	not available	not available
EBONYI	9.5KM	7.2 KM - 9.5 KM	available	available	not available	not available
EBONYI	9.5KM	7.2 KM - 9.5 KM	available	available	not available	not available
EBONYI	10KM	9.5 KM - 10KM	available	available	not available	not available
EBONYI	10KM	9.5KM - 10KM	available	available	not available	not available
EBONYI	10KM	9.5KM - 10KM	available	available	not available	not available
EBONYI	11KM	10KM - 11KM	available	available	not available	not available
EBONYI	11KM	10KM - 11KM	available	available	not available	not available
EBONYI	11KM	10KM - 11KM	available	available	not available	not available
EBONYI	1.3KM	AFK - OKG JUNC.(1.3KM)	not available	not available	not available	available
EBONYI	1.3KM	AFK - OKG JUNC.(1.3KM)	not available	not available	not available	available
EBONYI	1.3KM	AFK - OKG JUNC. (1.3KM)	not available	not available	not available	available
EBONYI	1.3KM	1.3KM - 2.3KM	not available	not available	not available	available
EBONYI	2.3KM	1.3KM - 2.3KM	not available	not available	not available	available
EBONYI	2.3KM	1.3KM - 2.3KM	not available	not available	not available	available
EBONYI	3KM	1KM - 3KM	available	available	not available	not available
EBONYI	4.5KM	3KM - 4.5KM	available	available	not available	not available
EBONYI	6.9KM	4.5KM - 6.9KM	available	available	not available	not available
EBONYI	9.3KM	6.9 KM - 9.3KM	available	available	not available	not available
EBONYI	10.3KM	9.3KM - 10.3KM	available	available	not available	not available
EBONYI	11.8KM	10.3KM - 11.8 KM	available	available	not available	not available
ABIA	NKWU EGBU ROAD	MARKET SQUARE	not available	not available	not available	available
ABIA	ABA ROAD	PRISONS	available	available	not available	available
ABIA	LIBRARY ROAD	GOVT. HOUSE JUNCTION	not available	not available	not available	not available
ABIA	LIBRARY ROAD	ITC MOTOR PARK	available	not available	not available	not available
ABIA	OKPARA SQUARE	MICHEAL OKPARA R/ABOUT	available	not available	available	not available
ABIA	CLUB ROAD	CLUB RD JUNCTION	available	not available	not available	not available
ABIA	MARKET SQUARE	ISI - GATE	not available	not available	not available	not available
ABIA	UMUWANYA ROAD	UWALAKA JUNCTION	not available	not available	not available	not available
ABIA	OWERRI ROAD	UMUOKPARA POLICE POST	available	not available	available	not available
ABIA	OWERRI ROAD	ABIA TOWER	available	not available	not available	not available
ABIA	UMUDIKE ROAD	GOVT. COLLEGE UMUDIKE	available	not available	not available	not available
ABIA	IKOT EKPENE ROAD	ORPET FUEL STATION	not available	not available	not available	not available
ABIA	BCA ROAD	BCA JUNCTION	available	not available	not available	available
ABIA	BEFORE EDUCATION BOARD	QUIKE JUNCTION	available	not available	not available	not available
ABIA	BENDE ROAD	ISIERE PRIMARY SCHOOL	available	available	available	not available
ABIA	TION	REDEEMED C. SIGNBOARD	available	not available	not available	not available
ABIA	ZONE 9	MOPOL BASE (ZONE G)	not available	not available	not available	not available
ABIA	CPS	CPS UMUAHIA	not available	not available	not available	not available
ABIA	ABA ROAD	UBA	available	not available	available	not available
ABIA	ABA ROAD	JOLLYNE PETROL LTD	available	not available	not available	not available



## SOME SELECTED ROAD CONDITION IN NIGERIA

STATE	ROAD SEGMENT	STARTING POINT	pot holes	Ditches	Gorges	road signs
ABIA	ABA ROAD	FMC	available	not available	not available	not available
ABIA	PHC EXP	UBAKALA JUNCTION	available	not available	not available	not available
ABIA	PHC EXP	NTA JUNCTION	available	available	available	not available
ABIA	PHC EXP	OHIYA CLOSE TO JUNCTION	available	not available	not available	not available
ABIA	PHC EXP	ABIA TOWER(PHC EXP)	available	not available	not available	not available
ABIA	ENU EXP	ABIA TOWER	available	not available	not available	not available
ABIA	ENU EXP	TIPPER SHED	not available	available	not available	not available
ABIA	ENU EXP	MEGA FILLING STATION	available	not available	not available	available
ABIA	UZUAKOLI ROAD	OHURU	available	available	not available	available
ABIA	UZUAKOLI ROAD	GIRLS COLLEGE UZUAKOLI	available	not available	not available	available
ABIA	UZUAKOLI ROAD	TIMBER SHED	available	not available	not available	not available
ABIA	UZUAKOLI ROAD	FORMER TOLL GATE	available	not available	not available	not available
ABIA	ALAOJI U-TURN ABA	ALAOJI U-TURN, ABA	available	not available	not available	not available
ABIA	URATA U - TURN	URATA U - TURN	available	not available	not available	not available
ABIA	OSISIOMA JUNCTION	OSISIOMA U - TURN, ABA	available	not available	not available	not available
ABIA	ARONGWA(UMUIJE)	UMUIJE VILLAGE	available	not available	not available	not available
ABIA	UMUIKAA U - TURN	UMUIKAA U - TURN	available	not available	not available	not available
ABIA	UMUOBASI VILLAGE	UMUOBASI VILLAGE	available	not available	not available	not available
ABIA	TONIMAS OIL PLANT	TONIMAS OIL PLANT	available	not available	not available	not available
ABIA	ALAOJI U-TURN ABA	ALAOJI U-TURN, ABA	available	not available	not available	not available
ABIA	URATA U - TURN	URATA U - TURN	available	not available	not available	not available
ABIA	OSISIOMA JUNCTION	OSISIOMA JUNCTION	available	not available	not available	not available
ABIA	ABA TOWNSHIP-ALAOJI	NGWA RD / ASA JUNCTION	available	not available	not available	not available
IMO	FIRE SERV.-CHRISTIAN HOSP.	FIRE SERVICE	available	not available	not available	not available
IMO	CONTROL-SECRETARIAT	CONTROL	available	not available	not available	not available
IMO	ORLU RD - AMAKOHA	ORLU RD JUNCTION	available	not available	not available	not available
IMO	ORLU RD - AMAKOHA	ORLU RD	available	not available	not available	not available
IMO	COARSE	FRSC BASE, ORLU	available	available	not available	available
IMO	OK - ARO	OK-UMULOLO JUNCTION	available	available	available	not available
IMO	OK - UMUAHIA	OKIGWE JUNCTION	available	not available	available	not available
IMO	UMUAHIA - OK	NUNYA JUNCTION	available	not available	available	not available
IMO	OK - ENUGU	OKIGWE JUNCTION	available	not available	available	not available
IMO	ENUGU - OK	ENU/ABIA BOUNDLY	available	not available	available	not available
IMO	OK - UTURU ROAD	OKIGWE JUNCTION	available	available	available	not available
ENUGU	TOTAL R/ABOUT-EDE/OBALLA	TOTAL ROUND ABOUT	not available	not available	not available	not available
ENUGU	EDE OBALLA - OZALLA	EDE OBALLA	available	not available	not available	not available
ENUGU	OZALLA - OGBEDE	OZALLA	available	not available	not available	not available
ENUGU	OGBEDE - IGBO ETITI	OGBEDE	available	not available	not available	not available
ENUGU	OPI-GHA ALUMO	OPI JUNCTION	available	not available	not available	available
ENUGU	EHA ALUMO -ORBA	EHA - ALUMO	available	not available	not available	available
ENUGU	ORBA - OBOLLO	ORBA	available	not available	not available	available
ENUGU	OBOLLO AFOZ-ENUGU EZIKE	OBOLLO AFOR	available	not available	not available	available
ENUGU	OBOLLO - IHEAKA	OBOLLO/NSK JUNCTION	available	not available	not available	not available
ENUGU	IHEAKA - OVOKO	IHEAKA	available	not available	not available	not available
ENUGU	OVOKO - OBUKPA	OVOKO	available	available	not available	not available
ENUGU	OBUKPA BEACH JUNCTION	OBUKIA	available	available	not available	not available
ENUGU	BEACH - IBAGWA JUNCTION	BEACH JUNCTION	available	not available	not available	not available
ENUGU	IBAGWA - IHEAKU AWKA	IBAGWA-OBUKPA JUNCTION	available	not available	not available	not available
ENUGU	IHEAKPU AWKA-OGROUTE EZIKE	IHEAKPU AWKA	available	not available	not available	not available



## SOME SELECTED ROAD CONDITION IN NIGERIA

STATE	ROAD SEGMENT	STARTING POINT	pot holes	Ditches	Gorges	road signs
ENUGU	ODENIGBO-BARRACKS JUNCT.	ODENIGBO	available	not available	not available	not available
ENUGU	BARRACKS-IBIMO	BARRACKS	available	not available	not available	not available
ENUGU	OBIMO-NKPOLOGU	OBIMO	available	not available	not available	available
ENUGU	UGWUOBA-OJIRU	UGWUOBA	available	available	not available	not available
ENUGU	OJI RIVER NKWO EZEAGU	OJI RIVER	available	available	available	not available
ENUGU	NKWO EZEAGU-9TH MILE	NKWO EZEAGU	available	not available	not available	not available
ENUGU	9TH MILE-UWANI NGWO	9TH MILE	available	not available	not available	not available
ENUGU	9TH MILE-UDI	9TH MILE FLYOVER	available	not available	not available	not available
ENUGU	UDI - OJI RIVER	UDI	available	not available	not available	not available
ENUGU	OJI RIVER UGWUOBA	OJI RIVER	available	available	not available	not available
ENUGU	9TH MILE-AWHUM	9TH MILE CORNER	available	not available	not available	not available
ENUGU	9TH MILE-UKA	9TH MILE	available	available	not available	available
ENUGU	ABAKPA JUNCTION	ABAKPA JUNCTION R/ABOUT	available	not available	not available	not available
ENUGU	T/EKULU JUNCTION	T/EKULU JUNCTION	available	available	not available	not available
ENUGU	NEW MKT./UGBODOGWU FLYOV.	NEW MARKET R/ABOUT	available	not available	not available	not available
ENUGU	FLYOVER-OZONGWU	UGBODOGWU FLYOVER	available	available	available	not available
ENUGU	EMENE FLYOVER-EKE	EMENE FLYOVER	available	not available	not available	not available
ENUGU	EKE-AKPUOGA NIKE	EKE - OBIGU JUNCTION	available	not available	not available	not available
ENUGU	AKPUOGA - AFFOR-EZZA	AKPUOGA NIKE	available	available	not available	not available
ENUGU	AFFOR-EZZA - AMECHI IDODO	AFFOR - EZZA MARKET	available	not available	not available	not available
ENUGU	AMECHI IDODO-ENUGU/EBONYI	AMECHI IDODO	available	not available	not available	not available
	BOUNDARY					
ENUGU	NNPC-UGWUAI	NNPC MEGA STATION	available	not available	not available	not available
ENUGU	UGWUAI - TOLL GATE	UGWUAI FLYOVER	available	not available	not available	not available
ENUGU	TOLL GATE - OZALLA	TOLL GATE	available	not available	not available	not available
ENUGU	OZALLA - AGBOGWUGU	OZALLA JUNCTION	not available	not available	not available	not available
ENUGU	AGBOGWUGU-SETRACO	AGBOGWUGU JUNCTION	not available	not available	not available	not available
ENUGU	SETRACO-AGWU JUNCTION	SETRACO SITE	available	not available	not available	not available
ENUGU	AGWU-ISHIAGU JUNCTION	AGWU JUNCTION	available	not available	not available	not available
ENUGU	ISHIAGU-ENUGU/ABIA BOUNDRY	ISHIAGU JUNCTION	available	not available	not available	not available
ENUGU	OKPARA AVENUE	PRISONS CLUB	available	not available	not available	available
ENUGU	OGUI ROAD	OSISATECH POLY	available	not available	not available	not available
ENUGU	CHIME AVENUE	OTIGBA JUNCTION	available	not available	not available	not available
ENUGU	AGBANI ROAD	NEAR POLICE COLLEGE	available	not available	not available	not available
ENUGU	TOTAL R/ABOUT-EDE/OBALLA	TOTAL ROUND ABOUT	not available	not available	not available	not available
ENUGU	EDE OBALLA - OZALLA	EDE OBALLA	available	not available	not available	not available
ENUGU	OZALLA - OGBEDE	OZALLA	available	not available	not available	not available
ENUGU	OGBEDE - IGBO ETITI	OGBEDE	available	not available	not available	not available
ENUGU	OPI - ALUMO	OPI JUNCTION	available	not available	not available	available



## SOME SELECTED ROAD CONDITION IN NIGERIA

STATE	ROAD SEGMENT	STARTING POINT	pot holes	Ditches	Gorges	road signs
ENUGU	ORBA - OBOLLO	ORBA	available	not available	not available	available
ENUGU	OBOLLO AFOZ-ENUGU EZIKE	OBOLLO AFOR	available	not available	not available	available
ENUGU	OBOLLO - IHEAKA	OBOLLO/NSK JUNCTION	available	not available	not available	not available
ENUGU	IHEAKA - OVOKO	IHEAKA	available	not available	not available	not available
ENUGU	OVOKO - OBUKPA	OVOKO	available	available	not available	not available
ENUGU	OBUKPA BEACH JUNCTION	OBUKPA	available	available	not available	not available
ENUGU	BEACH - IBAGWA JUNCTION	BEACH JUNCTION	available	not available	not available	not available
ENUGU	IBAGWA-IHEAKU AWKA	IBAGWA-OBUKPA JUNCTION	available	not available	not available	not available
ENUGU	IHEAKU AWKA-OGROUTE ENUGU-EZIKE	IHEAKPU AWKA	available	not available	not available	not available
ENUGU	IBAGWA/OBUKPA JC.-ODENIGBO	IBAGWA/OBUKPA JUNCTION	available	not available	not available	available
ENUGU	ODENIGBO-BARRACKS JUNCT.	ODENIGBO	available	not available	not available	not available
ENUGU	BARRACKS-OBIMO	BARRACKS	available	not available	not available	not available
ENUGU	OBIMO-NKPOLOGU	OBIMO	available	not available	not available	available
ENUGU	UGWUOBA-OJI RIVER	UGWUOBA	available	available	not available	not available
ENUGU	OJI RIVER NKWO EZEAGU	OJI RIVER	available	available	available	not available
ENUGU	NKWO EZEAGU-9TH MILE	NKWO EZEAGU	available	not available	not available	not available
ENUGU	9TH MILE UWANI NGWO	9TH MILE	available	not available	not available	not available
ENUGU	9TH MILE - UDI	9TH MILE FLYOVER	available	not available	not available	not available
ENUGU	UDI - OJI RIVER	UDI	available	not available	not available	not available
ENUGU	OJI RIVER UGWUOBA	OJI RIVER	available	available	not available	not available
ENUGU	9TH MILE - AWHUM	9TH MILE CORNER	available	not available	not available	not available



## SOME SELECTED ROAD CONDITION IN NIGERIA

STATE	ROAD SEGMENT	STARTING POINT	pot holes	ditches	gorges	road signs
EDO	EWU JUNCTION	FRSC AUCHI	available	available	available	available
EDO	BCC, OKPELLA	FRSC AUCHI	available	available	available	available
EDO	IBVAIMEN VILLAGE	FRSC AUCHI	available	available	available	not available
EDO	UPLAND JUNCTIO	FRSC AUCHI	available	available	available	not available
EDO	2ND EAST-OLUKU	2ND EAST CIRCU	available	not available	not available	not available
EDO	OLIHA MARKET	OLIHA MARKET	available	not available	not available	not available
EDO	SILUKO ROUND	SILUKO ROAD	available	not available	not available	not available
EDO	ADUWAWA JUNC.	ADUWAWA	available	available	not available	available
EDO	BENIN IGBOGIRI	RAMAT PARK	not available	available	not available	not available
EDO	IGBOGIRI-BENIN	IGBOGIRI-COMM.	not available	not available	not available	available
EDO	OLUKU-EGOR	OLUKU	available	not available	not available	not available
EDO	OLUKU-OWAN VIL.	OLUKU JUNC.	available	not available	not available	not available
EDO	OLUKU-OGBEMU-	OLUKU	available	available	not available	not available
EDO	OGBEMUDIA FARM	OGEMUDIA FARM	available	available	not available	not available
DELTA	DSC EXPRESS	MOFOR PARK	available	not available	not available	not available
DELTA	OTOKUTU	MOFOR PARK	not available	not available	not available	not available
DELTA	UGHELLI ROUND-	MOFOR PARK	not available	available	not available	not available
DELTA	OKPAKA JUNC.	UGHELLI ROUND	not available	not available	not available	not available
DELTA	NPA EXPRESS	EFFURUN ROUN-	not available	not available	not available	not available
DELTA	NPA EXPRESS	EFFURUN ROUN-	not available	available	not available	not available
DELTA	KM 2 -3	PTI JUNCTION	available	not available	not available	not available
DELTA	IYOMA PLAZA	PTI JUNCTION	available	not available	not available	not available
DELTA	SO OLOTU LTD.	PTI JUNCTION	not available	not available	not available	not available
DELTA	OZONE FILLING	PTI JUNCTION	available	not available	not available	not available
DELTA	OKUROWHE JUC.	PTI JUNCTION	not available	not available	not available	not available
DELTA	OHA	PTI JUNCTION	not available	not available	not available	available
DELTA	ARMY CHECK PO-	EFFURUN ROU-	not available	available	not available	not available
DELTA	ORHUNWHORUN	CROSS & STOP	available	available	not available	not available
DELTA	UDU ROAD	OVWIAN JUNC.	available	available	not available	not available
DELTA	DSC EXPRESS	MOFOR-DSC	not available	not available	not available	not available
DELTA	DSC EXPRESS	DSC PLANT MO-	available	not available	not available	not available
DELTA	AWFEKEDE ALI	ALIFEKEDE	not available	not available	not available	not available
DELTA	ALIHAGU-TURU	ALIHAGU	not available	not available	not available	not available
DELTA	EWURU JUNC.	EWURU JUNC.	available	not available	not available	not available
DELTA	IME-AGBOR OBI	IME - OBI	not available	not available	not available	not available
DELTA	UROM JUNG1 -	UROMI JUNC.	available	not available	not available	not available
DELTA	AGB. EXP. - COLL-	AGBOR/ASABA	available	not available	not available	not available
DELTA	AGBO-OBI - COLL-	AGBOR-OBI	available	not available	not available	not available
DELTA	AGBOR-EMUHU	AGBOR-TOWN	not available	not available	not available	not available
DELTA	EMUHU-UMUNE-	EMUHU	not available	not available	not available	not available



## SOME SELECTED ROAD CONDITION IN NIGERIA

STATE	ROAD SEGMENT	STARTING POINT	pot holes	Ditches	Gorges	road signs
DELTA	AGBOR-ABAVO	AGBOR	available	not available	not available	not available
DELTA	ABAVO - ORHION	ABAVO	available	available	available	not available
DELTA	ORHIONMOM	ORHIONMOM	available	not available	not available	available
DELTA	UROMI-OTTAH	UROMI JUNCTION	available	not available	not available	not available
DELTA	KM1-3	OTOVWODO	available	available	not available	not available
DELTA	KM 4-6	OTOVWODO	available	available	not available	not available
DELTA	KM 7-9	OTOVWODO	available	available	not available	not available
DELTA	KM 1-3	OTOVWODO	available	available	not available	not available
DELTA	KM 4-6	OTOVWODO	available	available	not available	not available
DELTA	KM 7-10	OTOVWODO	available	not available	not available	not available
DELTA	KM 1- 4	OTOVWODO	available	available	not available	available
DELTA	KM 5 - 8	OTOVWODO	available	available	not available	available
DELTA	KM 1 - 4	POLICE STATION	available	available	not available	available
DELTA	ASABA-IBUSA	NIGER HEAD BRIDGE	available	available	not available	available
DELTA	ISELE UKU-UMU	NIGER HEAD BRIDGE	not available	available	available	available
DELTA	AZAGBA-ISELE	NIGER HEAD BRIDGE	not available	not available	not available	available
DELTA	COKER-ISSELE	NIGER HEAD BRIDGE	available	available	available	not available
DELTA	ABRAKA-COKER	NIGER HEAD BRIDGE	available	available	available	not available
DELTA	HEAD BRIDGE	NIGER HEAD BRIDGE	not available	not available	available	not available
DELTA	UGBOLU-ILLAH	NIGER HEAD BRIDGE	available	not available	not available	available
DELTA	ASABA-UGBOLU	NIGER HEAD BRIDGE	not available	not available	not available	available
DELTA	AFOR-KWALE	NIGER HEAD BRIDGE	available	not available	not available	not available
DELTA	IBUSA TOWN	NIGER HEAD BRIDGE	available	available	not available	not available
DELTA	OLD OSSISSA -	NIGER HEAD BRIDGE	available	not available	not available	not available
DELTA	ISHEAGU-OLD	NIGER HEAD BRIDGE	available	not available	not available	available
DELTA	IBUSA-OGWASHI	NIGER HEAD BRIDGE	not available	available	available	not available
DELTA	OGWASHI-ISHEA	NIGER HEAD BRIDGE	available	available	available	not available
ANAMBRA	GTC-ADAMS AND	GTC SCHOOL	available	available	not available	not available
ANAMBRA	MKT. R/ABOUT	AWKA MARKET	available	not available	not available	not available
ANAMBRA	COURT RD-MKT	COURT ROAD	not available	not available	not available	not available
ANAMBRA	IGWEBUIKE-COURT	IGWEBUIKE SCH.	not available	not available	not available	not available
ANAMBRA	ST JOHN-IGWEB-	ST JOHN JUNCTION	not available	not available	not available	not available
ANAMBRA	AMAKU JUNCTION	AMAKU JUNCTION.	not available	not available	not available	not available
ANAMBRA	AMAENYI MARKET	AMAENYI MARKET	not available	not available	not available	not available
ANAMBRA	ANAMBRA BY-PASS	ANAMBRA BY PASS	available	available	not available	not available
ANAMBRA	AROMA-ANAMBRA	AROMA JUNCTION.	available	not available	not available	available
ANAMBRA	UGWUOBA-AROMA	UGWUOBA JUNCTION.	not available	available	not available	not available
ANAMBRA	AROMA-UGWUOBA	AROMA JUNCTION	available	not available	not available	not available
ANAMBRA	AMAWBIA BY PASS	AMAWBIA BY PASS.	available	available	not available	available
ANAMBRA	ENUGU-AGIDI	ENUGU-AGIDI	available	not available	not available	not available
ANAMBRA	AGULU MKT	AGULU MARKET	available	available	not available	not available
ANAMBRA	NRI JUNCTION -AGULU	NRI JUNCTION	available	available	not available	available



## SOME SELECTED ROAD CONDITION IN NIGERIA

STATE	ROAD SEGMENT	STARTING POINT	pot holes	Ditches	Gorges	road signs
ANAMBRA	EZZI-ABAGANA	ELLI-ELIAS, ENUGU	available	not available	not available	not available
ANAMBRA	NAWFIA MKT-EZZ	NAWFIA MARKET	available	not available	not available	not available
ANAMBRA	ADAM&EVE-NAW	ADAM&EVE R/ABOUT	available	not available	not available	not available
ANAMBRA	HEAD BRIDGE-	HEAD BRIDGE	available	not available	not available	not available
ANAMBRA	UGA JUNCTION	UGA JUNCTION	available	not available	not available	not available
ANAMBRA	OKPOKO BUST	OKPOKO BUSTOP	not available	available	not available	not available
ANAMBRA	TRACAS OIL	TRACAS BUSTOP	available	available	not available	not available
ANAMBRA	VI OIL-ENUGU	VI OIL	available	available	not available	not available
ANAMBRA	BEEISOIL-NKPO	BEEISOIL	available	available	not available	not available
ANAMBRA	ENUGU PARK	ENUGU PARK	available	available	not available	not available
ANAMBRA	NEWPORTS - TAR	NEWPORTS NK	available	available	not available	not available
ANAMBRA	TARZAN-TOLLGATE	TARZAN	available	available	not available	not available
ANAMBRA	UGA JUNCTION	UGA JUNCTION	not available	not available	not available	not available
ANAMBRA	OKPOKO JUNCTION	OKPOKO JUNCTION.	not available	not available	not available	not available
ANAMBRA	TRACAS-OKPOKO	TRACAS	available	not available	not available	not available
ANAMBRA	VI OIL-TRACAS	VI OIL	not available	not available	not available	not available
ANAMBRA	ENUGU PARK -VI-	ENUGU PARK	available	available	not available	not available
ANAMBRA	NEW PARTS NKP	NEW PARTS	available	not available	not available	not available
ANAMBRA	TARZAN-NEWPART	TARZAN	available	not available	not available	not available
ANAMBRA	TOLL GATE-TARZ	TOLL GATE	available	not available	not available	not available
ANAMBRA	LAGOS PARK-OBO	LAGOS PARK	available	available	not available	not available
ANAMBRA	NBI-AWKA ETITI	AWKA-ETITI-NITEL	available	not available	not available	not available
ANAMBRA	NBI-AWKA ETITI	NBI JUNCTION	available	not available	not available	not available
ANAMBRA	NPF-IDEMILI-SOUTH	NBI POLICE	not available	not available	not available	available
ANAMBRA	MADONNA-NBI	MADONNA CATHOLIC	not available	not available	not available	available
ANAMBRA	NBI-NKPOR	NBI JUNCTION	available	not available	not available	available
ANAMBRA	PHCN-NBI	PHCN	available	not available	not available	available
ANAMBRA	NBI-PHCN	ROMCHI PARK	available	not available	not available	available
ANAMBRA	CSS - CCC	COMMUNITY SEC.	available	available	not available	not available
ANAMBRA	COCA-COLA-CSS	COCA-COLA OFFICE.	available	available	not available	not available
ANAMBRA	UBA-COCA COLA	UBA NNEWI (OLD	available	available	not available	not available
ANAMBRA	L. CARTER-END	LOUIS CARTER	available	available	not available	not available
ANAMBRA	ALVDAK F/S-LOUIS	ALVDAK FILLING	available	available	not available	not available
ANAMBRA	NPF(A)-ALVDAK F/S	NPF(AREA COMM	available	available	not available	not available
ANAMBRA	MUODILE STREET	BUILDING MTL	available	available	not available	not available
ANAMBRA	BANK ROAD	IBETO PLAZA	available	available	available	not available
ANAMBRA	IPC-ORIZU PALACE	FRSC (IPC) -	available	available	not available	not available
ANAMBRA	EASTERN MASS -	IGWE-ORIZU RD.	available	available	not available	not available
ANAMBRA	ORIZU-OKIGWE RD	ORIZU PALACE	available	available	available	not available
ANAMBRA	TRAFFIC LIGHT -	TRAFFIC LIGHT	available	available	not available	not available
ANAMBRA	TRAFFIC LIGHT	TRAFFIC LIGHT	available	available	not available	not available
ANAMBRA	IHIALA-OZUBULU	BELVERY HILL	not available	not available	not available	available



## SOME SELECTED ROAD CONDITION IN NIGERIA

STATE	ROAD SEGMENT	STARTING POINT	potholes	ditches	gorges	road signs
KADUNA	KD JOS	MAR-JOS BRIDGE-KAD	available	available	available	not available
KADUNA	50KM	NEPA ROUNDABOUT	available	not available	not available	available
KADUNA	50KM	NEPA ROUNDABOUT	available	available	not available	available
KADUNA	40KM	NEPA ROUNDABOUT	available	available	not available	available
KADUNA	21KM	NEPA ROUNDABOUT	available	not available	not available	available
KADUNA	26KM	NEPA ROUNDABOUT	available	not available	not available	not available
KADUNA	9KM	UNITY BANK.B/ GWARI	available	available	available	not available
KADUNA	52 KM	SC SEC SCH UDAWA B/GWARI	available	available	available	not available
KANO	RIGHT	MILTARI	available	not available	not available	not available
KANO	RIGHT	DAMBATA	not available	not available	not available	not available
KANO	RIGHT	TUKUJ FARM CENTRE	not available	not available	not available	not available
KANO	1-2KM	1KMKABUGA GATE	not available	not available	not available	not available
KANO	2-3KM	TESUM PATRO	available	not available	not available	not available
KANO	3-4KM	BUK NEWSITE	not available	not available	not available	not available
KANO	11-10KM	KUNDUA HOUSING	not available	not available	not available	not available
KANO	2-5KM	KUKDA HOUSINGS	not available	not available	not available	not available
KANO	5-7KM	BY PASS R.ABOUT	not available	not available	not available	not available
KANO	7-9KM	KUNDIRA HOUSING	not available	not available	not available	not available
KANO	1KM	MIL TARA R.ABOUT	not available	not available	not available	not available
KANO	2-3KM	MIL TARA R.ABOUT	not available	not available	not available	not available
KANO	3-4KM	TUNIRAFI PR SCHOOL	not available	not available	not available	not available
KANO	4-5KM	DAMMARAYA FARM	not available	not available	not available	not available
KANO	6-7KM	HANAN KALIBANA	not available	not available	not available	not available
KANO	8-9KM	SHITU F/STATION	not available	not available	not available	not available
KANO	9-10KM	MILTARA R ABOUT	not available	not available	not available	not available
KANO	0-1KM	S/JUBILEE R/ABOUY	not available	not available	not available	not available
KANO	2-3KM	S/JUBILEE R/ABOUY	available	not available	not available	not available
KANO	4-5KM	S/JUBILEE R/ABOUY	not available	not available	not available	not available
KANO	6-7KM	S/JUBILEE R/ABOUY	not available	not available	not available	not available
KANO	7-8KM	S/JUBILEE R/ABOUY	not available	not available	not available	not available
KANO	8-9KM	S/JUBILEE R/ABOUY	not available	not available	not available	not available
KANO	10-11KM	S/JUBILEE R/ABOUY	not available	not available	not available	not available
KANO	12-13KM	S/JUBILEE R/ABOUY	not available	not available	not available	not available
KANO	13-14KM	S/JUBILEE R/ABOUY	not available	not available	not available	not available
KANO	14-15KM	S/JUBILEE R/ABOUY	not available	not available	not available	not available



## SOME SELECTED ROAD CONDITION IN NIGERIA

STATE	ROAD SEGMENT	STARTING POINT	pot holes	ditches	gorges	road signs
TARABA	TRAFFIC JUNC-HOE R/ABOUT	TRAFFIC JUNCTION	not available	not available	not available	not available
TARABA	MIN. OF ENVIRON-TRAFFIC JUNC	MIN. OF ENVIRONMENT	not available	not available	not available	not available
TARABA	NULGE HSE-MIN. OF ENVIRON	NULGE HOUSE	not available	available	not available	not available
TARABA	INVESTMENT-NULGE HOUSE	INVESTMENT HOUSE	available	not available	not available	not available
TARABA	HOE R/ABOUT-CENTRAL MKT	HOE R/ABOUT	available	available	not available	not available
TARABA	ROAD BLOCK -INVESTMENT HSE	ROAD BLOCK ROUND ABOUT	available	not available	not available	not available
TARABA	GOVT HSE-MANGA FILLING STN	GOVT HOUSE R/ABOUT	not available	not available	not available	available
TARABA	MANGA FILLING STN-HOE R/ABOUT	MANGA FILLING STATION	available	not available	not available	not available
TARABA	POLICE HQ JUNC-FED MIN OF AGRIC	POLICE HQ JUNCTION	available	not available	not available	not available
TARABA	FGGC JUNCTION-STADIUM	FGGC JUNC ALONG YOLA RD	available	not available	not available	not available
TARABA	STADIUM -MILE 6	NYAME STADIUM	not available	not available	not available	available
TARABA	MILE 6-CIVIL DEFENCE	MILE 6	not available	not available	not available	available
TARABA	CIVIL DEFENCE-IMMIGRATION OFFICE	CIVIL DEFENCE OFFICE	not available	not available	available	available
TARABA	IMMIGRATION-GANGARA VILLAGE	IMMIGRATION OFFICE	available	not available	not available	not available
TARABA	GANGARA-LANKAWIRI C/AREA	GANGARA VILLAGE	available	not available	not available	not available
TARABA	MKT-GOVT HOUSE R/ABOUT	CENTRAL MARKET	not available	not available	not available	not available
TARABA	GOVT HSE-COMMISSIONERS' QTRS	GOVT HOUSE R/ABOUT	available	available	not available	not available
TARABA	COMM QTRS-BYE PASS JUNCTION	COMM QTRS R/ABOUT	available	not available	not available	not available
TARABA	ROAD BLOCK-NUKAI MKT	ROAD BLOCK ROUND ABOUT	available	not available	not available	not available
TARABA	NUKAI MKT-ATC MAIN GATE	NUKAI MARKET	available	not available	not available	not available
TARABA	ATC- ARDO KOLA LG ESTATE	ATC MAIN GATE	not available	not available	not available	not available
TARABA	ARDO KOLA- JORO YINU VILLAGE	ARDO KOLA LG ESTATE	available	not available	not available	available
TARABA	SHAMBE HOTEL-MAYO GOI B/STOP	SHAMBE HOTEL	available	not available	not available	not available

## MAJOR COLLABORATORS/STAKEHOLDERS IN 2008

1. National Assembly (Committee on Road Safety)
2. Standard Organization of Nigeria (SON)
3. Various Non-Governmental Organizations (NGOs)
4. Legal Aid Council of Nigeria
5. Nigeria Medical Association (NMA)
6. Federal Ministry of Transportation
7. The Nigeria Police
8. Federal Ministry of Justice
9. Federal Ministry of Information
10. National Automotive Council (NAC)
11. National Commission for Women Society (NCWS)
12. Federal Road Maintenance Agency (FERMA)
13. Nigeria Red Cross
14. Dunlop Nigeria Plc
15. Michelin Nigeria Plc
16. Nigeria Institute of Transport Technology (NITT)
17. Nigeria Association of Road Transport Workers (NURTW)
18. Luxury Bus Owners of Nigeria (LUBON)
19. Road Transport Employers Association of Nigeria (RETAN)
20. Amalgamated Commercial Motorcycle Owners and Riders Association of Nigeria (ACOMORAN)



## MAJOR COLLABORATORS/STAKEHOLDERS IN 2008

21. World Health Organization (WHO)
22. Vehicle Inspection Officers (VIO)
23. Federal Ministry of Education
24. Anambra Motor Manufacturing Company (ANAMCO)
25. Chartered Institute of Logistics and Transport (CILT)
26. The Press
27. National Communication Commission (NCC)
28. National Broadcasting Commission (NBC)
29. Advertising Practitioners Council of Nigeria (APCON)
30. Nigeria Building and Road Research Institute (NBRRI)
31. National Insurance Commission (NAICON)
32. ECOWAS COMMISSION
33. WARSO
34. United bank for Africa (UBA)
35. Oceanic Bank International Plc
36. First Bank of Nigeria Plc
37. FinBank Plc
38. Intercontinental bank Plc
39. Taraba State Government.



**FEDERAL ROAD SAFETY COMMISSION**  
**2008 ANNUAL REPORT**



# Road Traffic Accident (RTA) Factors and Codes

S/NO	CAUSATIVE FACTORS	CODES
1	Over Speeding	SPV
2	Dangerous Driving	DGD
3	Tyre Burst	TBT
4	Brake Failure	BFL
5	Fatigue	FTQ
6	Dangerous Overtaking	DOT
7	Loss of Control	LOC
8	Stationary Vehicle/Obstruction	OBS
9	Sleeping on Steering	SOS
10	Route Violation	RTV
11	Light Sign Violation	LSV
12	Night Journey	NJR
13	Driving Under Alcohol/Drug Influence	DAD
14	Poor Weather	PWR
15	Mechanically Deficient Vehicle	MDV
16	Bad Road	BRD
17	Overloading	OVL
18	Traffic Light Disobedience	TLV
19	Use of GSM Phone while Driving	UPD
20	Others	

MINISTRY OF TRANSPORT



RTA FACTOR CODES

CAUSATIVE FACTORS

1. Over Speeding (SPV)

2. Dangerous Driving (DGD)

3. Tyre Burst (TBT)

4. Brake Failure (BFL)

5. Fatigue (FTQ)

6. Dangerous Overtaking (DOT)

7. Loss of Control (LOC)

8. Stationary Vehicle/Obstruction (OBS)

9. Sleeping on Steering (SOS)

10. Route Violation (RTV)

11. Light Sign Violation (LSV)

12. Night Journey (NJR)

13. Driving Under Alcohol/Drug Influence (DAD)

14. Poor Weather (PWR)

15. Mechanically Deficient Vehicle (MDV)

16. Bad Road (BRD)

17. Overloading (OVL)

18. Traffic Light Disobedience (TLV)

19. Use of GSM Phone while Driving (UPD)

20. Others





FEDERAL ROAD SAFETY COMMISSION  
RTI CASUALTY INFORMATION FORM (REVISED)  
SUMMARY

FRSC/FRS/MTA/02



5450

[illegible]

LEGEND:

M =	MALE
F =	FEMALE
C =	CHILD
FAT =	FATAL
SER =	SERIOUS
VEH =	VEHICLE
MIN =	MINOR

VEHICLE TYPE	
GOVT =	GOVERNMENT
TRL =	TRAILER
LOK =	LOBBY
TRK =	TANKER
PVT =	PRIVATE
COMM =	COMMERCIAL
DIP =	DIPLOMATIC

K/EIS - MERCEDES BENZ  
M/C - MOTOR CYCLE  
B/C - BICYCLE

NAME:  
RANK:  
PIN:  
DATE:  
GSM NO:

ROUTE  
E.G.  
LAGOS - IBADAN - LAG - IBI

MORE  
 < LESS THAN  
 > GREATER THAN

COMMANDING OFFICER, S770 0100  
NAME: \_\_\_\_\_  
PIN: \_\_\_\_\_  
SIGN: \_\_\_\_\_  
DATE: \_\_\_\_\_  
GSM NO: \_\_\_\_\_